

Anne Davies

AUDIOLOGY



The **8th**

Steering a True Course

Practical Skills for Leading Audiology Services,
Taught by Senior Leaders in NHS Audiology

Residential course

Accommodation (bed and breakfast) is available to book, at the additional cost of
£70 per night en-suite
£55 per night non en-suite

Course
fee:
£396

Booking deadline:
Wednesday 2nd
January 2019

Tuesday 29th -
Thursday 31st January 2019

High Leigh Conference Centre, Hoddesdon, Hertfordshire



This course gives insight into the processes that are essential to decision-making in Audiology services. The course faculty are experienced clinical leaders working within NHS hearing healthcare, motivated to pass on what has worked for them.

The course is suitable for anyone who aspires to a leadership position in Audiology. The resources, tools and information will particularly benefit those in clinical leadership roles or who are managing, developing and leading Audiology services. The course provides 'time out' to reflect on your skills and self-management, in order to give greater personal understanding of leadership and what it can mean for you.

The course explores leadership qualities, communication skills, leading a team, change management, service development, current issues in Audiology, and the practicalities of running a service.

Comments from the previous course

"Has inspired me and given me direction to help make changes, both at work and in my career."

"I have wanted to attend this course for two years. It did not disappoint."

"This has given me the confidence to think outside my job role and to influence change."

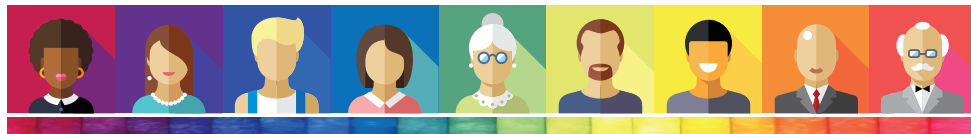
"Excellent learning and networking opportunity."

"Time away from work to listen and think about things in a different way."

"An opportunity to listen to the experience and advice of knowledgeable leaders."

"Very useful, inspirational!"

"A very informative and interesting course for those wishing to develop their leadership skills in audiology."



Course Faculty

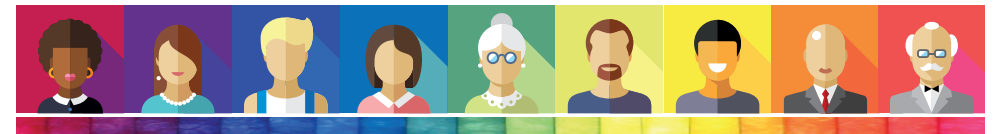
Ruth Thomsen	Scientific Director NHS England (London Region)
Dr Jagjit Sethi	Head of Hearing and Balance Services Clinical Director & Lead Healthcare Scientist for BHFT Berkshire Healthcare NHS Foundation Trust
Dr Christine DePlacido	Senior Lecturer, Queen Margaret University, Edinburgh
Adam Beckman	Head of Audiology Services Plymouth Hospitals NHS Trust
Jonathan Parsons	Managing Director, Consultant Clinical Scientist Chime Social Enterprise, Devon
John Day	Clinical Director of Audiology BCU LHB, North Wales
Will Brassington	Consultant Clinical Scientist University Hospitals, Birmingham
Tony Corcoran	Head of Service (retired), Bournemouth
Dr John Fitzgerald	Head of Audiological Services Norfolk and Norwich University Hospitals
Professor Adrian Davis OBE	Director, AD CAVE Solutions Ltd, London

Venue and Accommodation

The course venue is High Leigh Conference Centre, Lord Street, Hoddesdon, Hertfordshire EN11 8SG. Accommodation costs are not included in the course fee.

Bed and breakfast accommodation is available at the Conference Centre at £70 per night en-suite, £55 per night non en-suite (shared bathroom). This is booked via my website with the course registration. Accommodation cannot be booked directly with the venue.

The course fee includes evening dinner on Tuesday and Wednesday evening of the course.



Anne Davies

AUDIOLOGY



Registering for the course

To register on the course, and book accommodation, please complete the online course registration at:

www.audiology-courses.co.uk

Methods of Payment:

Purchase Order number and invoice address (supplier: Anne Davies Audiology Courses)

Cheque (payable to Anne Davies Audiology Courses)

Credit / debit card

For enquiries, please contact:

Anne Davies

Principal Clinical Scientist (Audiology)

Email: anne@audiology-courses.co.uk

Tel: 07985 075428

If you are travelling from overseas and require a visa: once you register and pay, we can provide a letter confirming your place on the course. Please contact us to discuss.

www.audiology-courses.co.uk

