

Anne Davies



AUDIOLOGY

The 12th

Paediatric Assessment: A Refresher Course

An Introduction / Update for Behavioural Testing in Paediatric Audiology

Comments from the 2018 course delegates

“The best learning environment I’ve been in,
in a long time.”

“A great refresher with up-to-date guidance.”

“A very valuable and insightful few days,
looking forward to implementing this knowledge.”

Course
fee:
£298

Booking deadline:
Tuesday 8th
October 2019

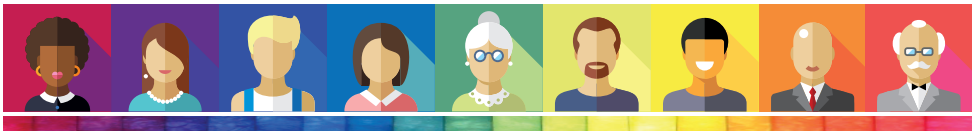
Tuesday 5th - Thursday 7th November 2019

Phonak UK Ltd, Sonova House, Lakeside Drive, Warrington

In conjunction with



THE PHONAK ACADEMY



This is an introductory course to Paediatric Assessment (Behavioural Testing). The course is for Audiologists who are beginning to work in Paediatric Testing or who would like an update on current test protocols.

The course will be of interest to those wishing to gain an insight into Paediatric Audiology or who may be considering running their own service. It is also appropriate as a short focused orientation for non-graduates (including associate and assistant practitioners) who may be assisting in paediatric clinics.

The course covers all the main behavioural tests, including speech discrimination testing and VRA using insert earphones and bone conduction. It also includes introduction to history taking, planning the session, calibration and room set-up, management decisions and report writing.

During the course, delegates will receive appropriate national guidelines for Paediatric Testing.

The course does not cover objective testing, advanced practice or assessment of complex cases.

Accommodation and Travel

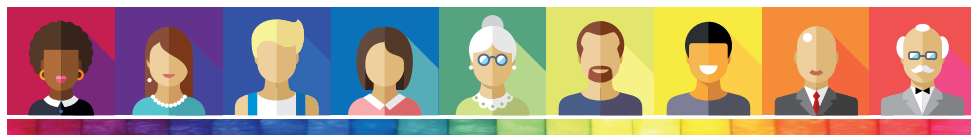
This is a non-residential course; delegates are responsible for booking their own accommodation. Accommodation costs are not included in the course fee.

The course venue is Sonova House, Lakeside Drive, Warrington, WA1 1RX. This is situated in Warrington town centre. 'Premier Inn, Warrington Centre' and 'The Village Hotel Club, Warrington' are a short walk from the Phonak offices. There are a number of other hotels and bed & breakfast within close proximity in central Warrington.

The course fee includes evening dinner on the Tuesday evening of the course.

Driving into and out of Warrington can be subject to considerable delay during rush-hour. We therefore recommend staying over in Warrington rather than driving daily. Where the latter is unavoidable, please leave plenty of time for your journey.

Leaving the course early on the final afternoon is not advised. Train travel from the Warrington stations should be booked for no earlier than 4.45pm.



Course Faculty

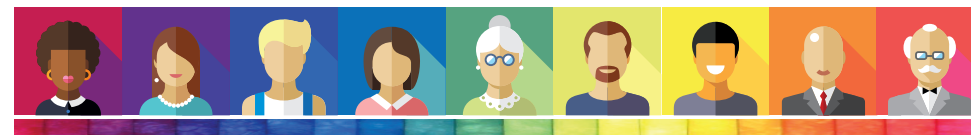
- Georgie Hill** Clinical Scientist / Children's Senior Commissioning Manager, Derbyshire CCG, Chesterfield
- Dr Greg Nassar** Principal Clinical Scientist (Audiology), Head of Audiology Services, Trafford Hospitals, Manchester University NHS FT, Manchester
- Kathryn Woolley** Head of Audiology, Leighton Hospital, Crewe
- Kathryn Lewis** Head of Audiology, Withington Community Hospital, Manchester University NHS FT, Manchester
- Jonathan Proffitt** Senior Calibration Engineer (Audiology), Withington Community Hospital, Manchester University NHS FT, Manchester
- Dr Marc Spinoza** Speciality Grade Doctor in Community Paediatrics, Hackney and Homerton Hospital, London

Course Content

- | | | |
|--|----------------------------|-------------------------------|
| Paediatric Development Syndromes and Disorders | Planning the Session | VRA |
| Child Protection Issues | History Taking | Distraction Testing |
| Calibration Essentials | Management Decisions | Play Audiometry |
| | Report Writing | Speech Discrimination Testing |
| | Communicating with Parents | Tympanometry and Reflexes |

In conjunction with 

THE PHONAK ACADEMY



Anne Davies

AUDIOLOGY



Registering for the course

To register on the course, please complete the online course registration at:

www.audiology-courses.co.uk

Click on the course title, and then 'register now'.

Methods of Payment:

Purchase Order number and invoice address (supplier: Anne Davies Audiology Courses)

Cheque (payable to Anne Davies Audiology Courses)

Credit / debit card

Monthly instalments by direct debit (UK customers). Two payments of 50% over two months, or three payments of 33.3% over three months, interest free.

If you are travelling from overseas and require a visa: once you register and pay, we can provide a letter confirming your place on the course. Please contact us to discuss.

For enquiries, please contact:

Anne Davies

Principal Clinical Scientist (Audiology)

Email: anne@audiology-courses.co.uk

Tel: 07985 075428

www.audiology-courses.co.uk

In conjunction with



THE PHONAK ACADEMY

