

# Anne Davies



# AUDIOLOGY



COURSES



## Paediatric Assessment: A Refresher Course

An Introduction / Update for Behavioural Testing in Paediatric Audiology

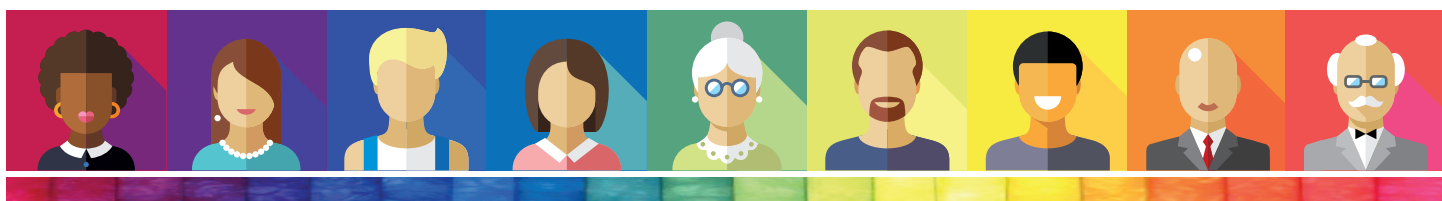
Tuesday 5<sup>th</sup> - Thursday 7<sup>th</sup> November 2019

## Course Programme

In conjunction with



THE PHONAK ACADEMY



## Tuesday 5<sup>th</sup> November 2019

9.00	Registration and Coffee
9.15	Welcome
9.25	Course Introduction
9.45	Paediatric Development
10.50	Break
11.05	History Taking
11.40	Calibration Essentials
12.45	Lunch
1.45	Child Protection Issues
2.20	Distraction Testing
2.55	VRA Basics
3.30	Break
3.45	VRA Beyond the Basics
4.50	Play Audiometry
5.20	End of Day One

## Wednesday 6<sup>th</sup> November 2019

8.45	Coffee
9.00	Introduction to ANSD and APD
10.05	Speech Discrimination Testing
11.10	Break
11.25	Automatic Verification of Paediatric Fittings with TargetMatch
12.00	Tympanometry and Reflexes
12.45	Lunch
1.45	Planning the Session
3.30	Break
3.45	Syndromes and Disorders
5.05	Report Writing
5.35	End of Day Two

## Thursday 7<sup>th</sup> November 2019

8.45	Coffee
9.00	Management Decisions
10.05	Communicating with Parents
10.50	Break
11.05	Complex Cases
11.55	Case Presentations
12.30	Lunch
1.30	Workshop
3.00	Equipment Demonstration
3.30	Course Review & Close
4.00	End of Course



## Course Content

### Paediatric Development

A whistle-stop tour of stages in child development assessed by paediatricians as part of a paediatric history (including aspects of Down syndrome), which have implications for audiology testing.

### History Taking

The essentials of a good history, why and when. Appropriate questions to ask. Example of history taking in clinic.

### Calibration Essentials

The importance of calibration for paediatric audiology specifically.

### Child Protection Issues

Raising awareness of child protection issues in relation to audiology.

### Distraction Testing

The orienting reflex and the most appropriate sounds to evoke a response. Criteria for testing, equipment required, frequencies produced, room set-up and pitfalls.

### VRA Basics

Underlying principles of Visual Reinforcement Audiometry (VRA), room set-up, equipment. The practical procedure of performing VRA in the soundfield.

### VRA Beyond the Basics

The challenges whilst performing VRA; tactics and good practice to obtain reliable results. The use of insert earphones and bone conductor transducers. Interpretation of VRA results.

### Play Audiometry

The requirements of the test, environment, and equipment. A review of the co-operative test. The suitability of play audiometry and the techniques, procedure and results. This is supported by a video demonstration.

### Introduction to ANSD and APD

A basic introduction to these conditions, diagnosis and correct management, case studies.

### Speech Discrimination Testing

The various types of speech tests available. Appropriate tests for developmental age. Examples of live test in a clinic.

### Tympanometry and Reflexes

The difference between standard and high frequency tympanometry testing and results. Test protocols, parameters and pitfalls.

### Planning the Session

Why and when do we plan, using information from the referral and history, deciding which tests to use, interactive group work.

### Syndromes and Disorders

A review of causes of deafness including syndromes, infections and other disorders affecting hearing.

### Report Writing

Essence and structure of a good report. Why we write them, who to, and what should they inform the recipient about.

### Management Decisions

Factors to be considered when formulating management plans. Discussion of case histories and management options.

### Communicating with Parents

Communications skills, scenarios and group work on explaining different results.

### Complex Cases

Tips and tactics to get the most out of an assessment when testing is more complex or challenging than expected.

### Case Presentations

Examples of when to change how we assess and adapt when faced with more challenging cases in clinic.

### Workshop

Hands-on work in small groups.

## Course Faculty

### Georgie Hill

Clinical Scientist / Children's Senior Commissioning Manager  
Derbyshire CCG, Chesterfield

### Adam Walker

Clinical Scientist (Audiology),  
Trafford Hospitals,  
Manchester University NHS FT, Manchester

### Dr Greg Nassar

Principal Clinical Scientist (Audiology)  
Head of Audiology Services  
Trafford Hospitals,  
Manchester University NHS FT, Manchester

### Kathryn Woolley

Head of Audiology  
Leighton Hospital, Crewe

### Kathryn Lewis

Head of Audiology  
Withington Community Hospital,  
Manchester University NHS FT, Manchester

### Jonathan Proffitt

Senior Calibration Engineer (Audiology)  
Withington Community Hospital,  
Manchester University NHS FT, Manchester

### Dr Marc Spinoza

Speciality Grade Doctor in Community Paediatrics  
Hackney and Homerton Hospital, London

### Graham Hilton

Head of Professional Services,  
Phonak UK

In conjunction with



[www.audiology-courses.co.uk](http://www.audiology-courses.co.uk)

THE PHONAK ACADEMY

