

# Anne Davies



# AUDIOLOGY



The **9<sup>th</sup>**

## Steering a True Course

Practical Skills for Leading Audiology Services,  
Taught by Senior Leaders in NHS Audiology

### Residential course

Accommodation (bed and breakfast) is available to book, at the additional cost of  
£70 per night en-suite  
£55 per night non en-suite

Course  
fee:  
**£387**

Booking deadline:  
Tuesday 31<sup>st</sup>  
December 2019

Tuesday 28<sup>th</sup> -  
Thursday 30<sup>th</sup> January 2020

High Leigh Conference Centre, Hoddesdon, Hertfordshire



**Leadership development, specifically for Audiology. This course is for anyone (public or private sector) in a clinical lead role, who aspires to lead an Audiology service. It is also suitable for those who are new to managing Audiology services.**

The course is taught by experienced senior leaders in audiology, and provides practical skills on all aspects of running audiology services. The course explores leadership qualities, communication skills, leading a team, business planning, change management, service development, innovation, and current issues in Audiology.

This is an exceptional opportunity to gain resources, tools and insights from key clinical leaders in audiology, who are motivated to pass on what has worked for them.

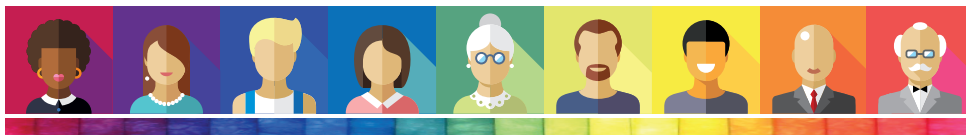
## Accommodation and Travel

The course venue is High Leigh Conference Centre, Lord Street, Hoddesdon, Hertfordshire, EN11 8SG. Accommodation costs are not included in the course fee.

Bed and breakfast is available at the Conference Centre at the discounted rate of £70 per night en-suite, £55 per night non en-suite (shared bathroom). This is booked on my website with the course registration. Accommodation cannot be booked directly with the venue.

The course fee includes lunch but does not include evening meal. Evening meal on Tuesday and Wednesday is available for residential delegates only, and is included in the accommodation booking at no extra charge.

Leaving the course early on the final afternoon is not advised. Train travel from Broxbourne should be booked for no earlier than 4.00pm.



## Course Faculty

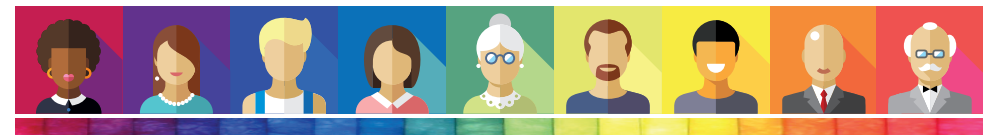
<b>Dr Jagjit Sethi</b>	Head of Hearing and Balance Services Clinical Director & Lead Healthcare Scientist for BHFT Berkshire Healthcare NHS Foundation Trust
<b>Ruth Thomsen</b>	Scientific Director NHS England (London Region)
<b>Dr Christine DePlacido</b>	Principal Clinical Scientist & Counsellor, Fife
<b>Dr Rachel McCarthy</b>	Consultant Clinical Scientist, Head of Audiology Royal Berkshire NHS Foundation Trust, Reading
<b>Adam Beckman</b>	Head of Audiology Services University Hospitals Plymouth NHS Trust
<b>Jonathan Parsons</b>	Managing Director, Consultant Clinical Scientist Chime Social Enterprise, Devon
<b>John Day</b>	Clinical Director of Audiology BCU LHB, North Wales
<b>Will Brassington</b>	Consultant Clinical Scientist University Hospitals, Birmingham
<b>Tony Corcoran</b>	Head of Service (retired), Bournemouth
<b>Dr John Fitzgerald</b>	Head of Audiological Services Norfolk and Norwich University Hospitals

## Comments from previous delegates

"Having so many key people in audiology present, to ask advice and approach, is fantastic."

"Informative, inspiring and relevant to anyone interested in where audiology is going."

"A 'must' for anyone who wants to be a leader. You can learn a lot in three days."



# Anne Davies



# AUDIOLOGY

# COURSES

## Registering for the course

To register on the course and book accommodation, please complete the online course registration at:

[www.audiology-courses.co.uk](http://www.audiology-courses.co.uk)

Click on the course title, and then 'register now'.

### Methods of Payment:

**Purchase Order number and invoice address** (supplier: Anne Davies Audiography Courses)

**Cheque** (payable to Anne Davies Audiography Courses)

**Credit / debit card**

**Monthly instalments by direct debit (UK customers).** Two payments of 50% over two months, or three payments of 33.3% over three months, interest free.

If you are travelling from overseas and require a visa: once you register and pay, we can provide a letter confirming your place on the course. Please contact us to discuss.

### For enquiries, please contact:

Anne Davies

Principal Clinical Scientist (Audiology)

**Email:** [anne@audiology-courses.co.uk](mailto:anne@audiology-courses.co.uk)

**Tel:** 07985 075428

[www.audiology-courses.co.uk](http://www.audiology-courses.co.uk)

