

# Anne Davies



# AUDIOLOGY



The **2<sup>nd</sup>**

## Paediatric Hearing Aids: An Introduction

An Introduction / Update on Clinical Skills for Paediatric Habilitation

**A workshop on the final morning will involve:**

Oticon, GN Hearing and Phonak,  
paediatric hearing aid range and features.

The Phonak Roger system.

Otometrics, Interacoustics and Sivantos,  
RECD measurements on this equipment.

**Course  
fee:  
£298**

**Booking deadline:  
Tuesday 24<sup>th</sup>  
March 2020**

**Tuesday 21<sup>st</sup> - Thursday 23<sup>rd</sup> April 2020**  
**Phonak UK Ltd, Sonova House, Lakeside Drive, Warrington**

In conjunction with



**THE PHONAK ACADEMY**



**This is an introductory course to Paediatric Habilitation. The course is for Audiologists who are beginning to work in paediatric hearing aid clinics, or who would like an update.**

The course will be of interest to professionals who work with audiologists and who wish to gain an insight into paediatric hearing aid clinics. It is also appropriate as a short focused orientation for non-graduates (including associate and assistant practitioners) who may be assisting in clinics.

The course covers all aspects of routine paediatric hearing aid clinics, including strategies for testing, hearing aid provision with limited threshold information, RECD, verification and outcome measures, wireless accessories, and multi-disciplinary teams.

The course does not cover advanced practice, assessment of complex cases, or paediatric assessment techniques.

On the final morning there will be a workshop on paediatric hearing aid technology and RECD measurements. The following manufacturers will be involved: Oticon, GN Hearing, Phonak - paediatric hearing aid range and features. The Phonak Roger system - demonstration and discussion. Otometrics, Interacoustics, Sivantos - RECD measurements on this equipment.

## Accommodation and Travel

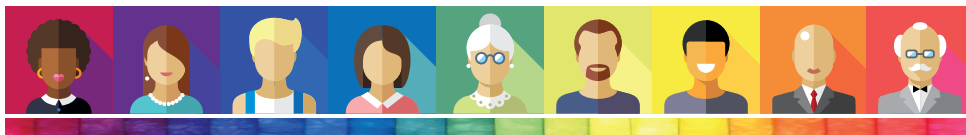
This is a non-residential course; delegates are responsible for booking their own accommodation. Accommodation costs are not included in the course fee.

The course venue is Sonova House, Lakeside Drive, Warrington, WA1 1RX. This is situated in Warrington town centre. 'Premier Inn, Warrington Centre' and 'The Village Hotel Club, Warrington' are a short walk from the Phonak offices. There are a number of other hotels and bed & breakfast within close proximity in central Warrington.

The course fee includes evening dinner on the Tuesday evening of the course.

Driving into and out of Warrington can be subject to considerable delay during rush-hour. We therefore recommend staying over in Warrington rather than driving daily. Where the latter is unavoidable, please leave plenty of time for your journey.

Leaving the course early on the final afternoon is not advised. Train travel from the Warrington stations should be booked for no earlier than 4.30pm.



## Course Faculty

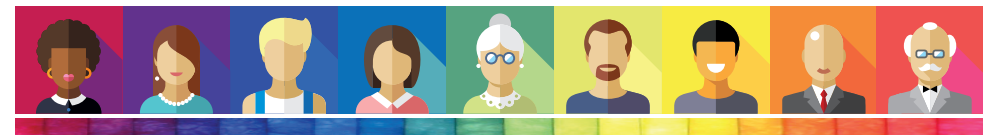
<b>Georgie Hill</b>	Clinical Scientist, Sheffield Children's Hospital NHS FT, Sheffield
<b>Adam Walker</b>	Clinical Scientist (Audiology), Trafford Hospitals, Manchester University NHS FT, Manchester
<b>Dr Greg Nassar</b>	Principal Clinical Scientist (Audiology), Head of Audiology Services, Trafford Hospitals, Manchester University NHS FT, Manchester
<b>Kathryn Woolley</b>	Head of Audiology, Leighton Hospital, Crewe
<b>Kathryn Lewis</b>	Head of Audiology, Withington Community Hospital, Manchester University NHS FT, Manchester
<b>Ed Brown</b>	Consultant Clinical Scientist (Audiology), Head of Audiology, Royal Hospital, Sunderland
<b>Graham Hilton</b>	Head of Professional Services, Phonak UK
<b>Tony Murphy CEng MIET</b>	Wireless Communications Specialist, Phonak UK
<b>Dr Imran Mulla PhD</b>	Audiology Lead for Education, Bolton Sensory Support

## Course Content

Preparing the Parents Difference between Adults and Children Communicating with the Family Multi-Disciplinary Teams	Prescription Formulae RECD and REAR Strategies for Testing Evaluation & Verification Outcome Measures Issues after Fitting Transition Services	Planning the Fitting & Review Limited Threshold Information Wireless Accessories Roger System Introduction to Complex Fittings
--	--	---

In conjunction with 

THE PHONAK ACADEMY



# Anne Davies

# AUDIOLOGY



## Registering for the course

To register on the course, please complete the online course registration at:

[www.audiology-courses.co.uk](http://www.audiology-courses.co.uk)

Click on the course title, and then 'register now'.

### Methods of Payment:

**Purchase Order number and invoice address** (supplier: Anne Davies Audiology Courses)

**Cheque** (payable to Anne Davies Audiology Courses)

**Credit / debit card**

**Monthly instalments by direct debit (UK customers).** Two payments of 50% over two months, or three payments of 33.3% over three months, interest free.

If you are travelling from overseas and require a visa: once you register and pay, we can provide a letter confirming your place on the course. Please contact us to discuss.

### For enquiries, please contact:

Anne Davies

Principal Clinical Scientist (Audiology)

**Email:** [anne@audiology-courses.co.uk](mailto:anne@audiology-courses.co.uk)

**Tel:** 07985 075428

[www.audiology-courses.co.uk](http://www.audiology-courses.co.uk)

In conjunction with



THE PHONAK ACADEMY

