

Anne Davies



AUDIOLOGY



COURSES



Steering a True Course

An Award-Winning Leadership Course,
Delivered by Senior Leaders in NHS Audiology

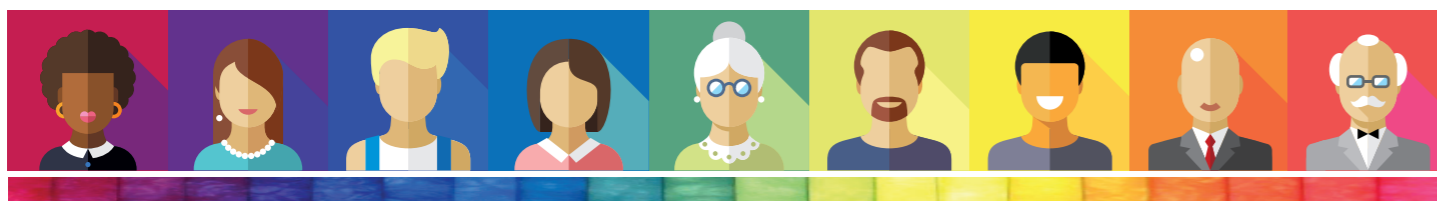
Tuesday 26th - Thursday 28th January 2021

Course Programme



Tuesday 26th January 2021

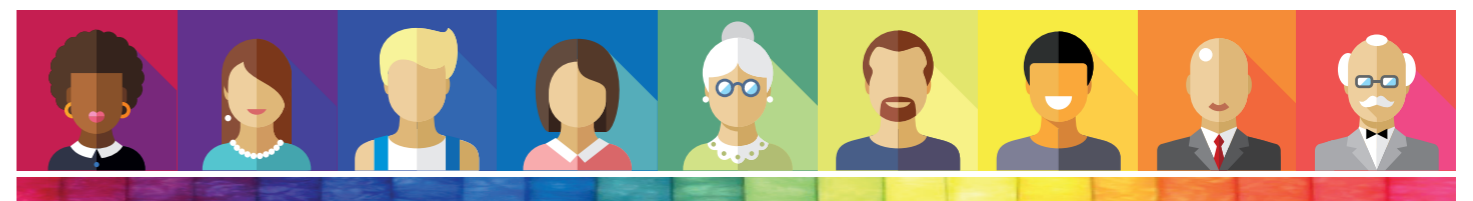
| | |
|---------|--|
| 8.45am | Registration and Coffee |
| 9.00am | Welcome and Introduction to the Course |
| 9.15am | Dr Jagjit Sethi Consultant Clinical Scientist, Head of Hearing and Balance Services, Clinical Director & Lead Healthcare Scientist for BHFT Berkshire Healthcare NHS Foundation Trust Into the Labyrinth of UK Health and Social Care |
| 10.15am | Ruth Thomsen Scientific Director NHS England (London Region) Successful Outcomes Through Changing Mindsets |
| 11.15am | Coffee Break |
| 11.30am | Dr Christine DePlacido Principal Clinical Scientist & Counsellor, Fife Maintaining Healthy Work Relationships - What Would Freud Do? |
| 12.30pm | Lunch |
| 1.30pm | Ruth Thomsen Scientific Director NHS England (London Region) Changing Mindsets: Workshop |
| 2.30pm | Dr Rachel McCarthy Consultant Clinical Scientist, Head of Audiology, Royal Berkshire NHS Foundation Trust, Reading Find Time to Lead: Dealing with the Nuts and Bolts |
| 3.30pm | Coffee Break |
| 3.45pm | Adam Beckman Head of Audiology Services, University Hospitals Plymouth NHS Trust Quality |
| 5.00pm | Dr Jagjit Sethi Consultant Clinical Scientist, Head of Hearing and Balance Services, Clinical Director & Lead Healthcare Scientist for BHFT Berkshire Healthcare NHS Foundation Trust Mindfulness |
| 5.30pm | Close of day |



Wednesday 27th January 2021

| | |
|---------|---|
| 9.00am | Coffee |
| 9.15am | Jonathan Parsons Managing Director, Consultant Clinical Scientist Chime Social Enterprise, Exeter Leadership - Some of What it Takes |
| 10.15am | John Day Clinical Director of Audiology Betsi Cadwaladr University Health Board, North Wales Strategic Management in Audiology - Recognising and Influencing the Bigger Picture |
| 11.15am | Coffee Break |
| 11.30am | Will Brassington Consultant Clinical Scientist, University Hospitals, Birmingham Influencing Change: A Scientific Approach to Leadership |
| 12.30pm | Lunch |
| 1.30pm | Tony Corcoran Head of Service (retired), Bournemouth Provider Driven Service Development |
| 2.30pm | Dr John Fitzgerald Consultant Clinical Scientist, Head of Audiological Services Norfolk and Norwich University Hospitals Making Service Development Happen |
| 3.30pm | Coffee break |
| 3.45pm | Jonathan Parsons Managing Director, Consultant Clinical Scientist Chime Social Enterprise, Exeter From NHS Service to Social Enterprise - Some Reflections on the Journey and Destination |
| 4.45pm | Dr Christine DePlacido Principal Clinical Scientist & Counsellor, Fife Relaxation: A Taster Session |
| 5.30pm | Close of day |

Evening meal (6.30pm) on Tuesday and Wednesday evening is included for those who are staying at the Conference Centre.



Thursday 28th January 2021

| | |
|---------|--|
| 9.00am | Coffee |
| 9.15am | Tony Corcoran Head of Service (retired), Bournemouth Innovation |
| 10.15am | Tony Corcoran Head of Service (retired), Bournemouth Epidemiology |
| 10.35am | Anne Davies Principal Clinical Scientist, Middlesbrough Time Management |
| 11.15am | Coffee Break |
| 11.30am | Dr Christine DePlacido Principal Clinical Scientist & Counsellor, Fife Preventing Burnout |
| 12.30pm | Lunch |
| 1.30pm | Will Brassington Consultant Clinical Scientist, University Hospitals, Birmingham Leadership - The Uncut Guide! |
| 2.30pm | Coffee, Discussion, Feedback on Course |
| 3.30pm | Close of Course |

Chairs of Course

The Speaker Faculty
and
Amy Lennox
Director / Specialised Audiologist,
Hypatia Training Ltd
Hypatia Dizziness & Balance Clinic

www.audiology-courses.co.uk

