

# Anne Davies



# AUDIOLOGY



The **7<sup>th</sup>**

## Hearing Aids: The Inside Track

Current Trends in Hearing Aid Technology, REM, and Management of Non-Routine / Complex Hearing Loss

### Residential course

Accommodation (bed and breakfast) is available to book, at the additional cost of  
£60 per night en-suite  
£45 per night non en-suite

Course  
fee:  
**£296**

Booking deadline:  
Tuesday 2<sup>nd</sup>  
June 2020

Tuesday 30<sup>th</sup> June - Thursday 2<sup>nd</sup> July 2020

The Hayes Conference Centre, Alfreton, Derbyshire



A collaboration across manufacturers, focused on new developments in hearing aid technology, best practice in REM measurements, and management of individuals with non-routine / complex hearing loss. This course is open to all audiologists, however will be of particular interest to senior Audiologists and HAD's who wish to advance their knowledge of latest trends and emerging technology.

The course covers compression strategies, open fittings, prescriptive formulae, REM signals and protocols, speech mapping, test-box measurements, verification, speech tests, speech in noise assessment, and connectivity. New talks include telecare, e-health, the internet of things, ear to ear processing, and rechargeable devices.

Advanced practice is discussed for non-standard audiogram configurations, asymmetrical and single sided deafness, and profound and challenging hearing losses. Talks through the course also reflect on key principles in hearing loss rehabilitation.

This is a unique opportunity to understand new developments in the hearing aid industry, and to discuss clinical implications and best practice.

This course relates to adult hearing aid provision. It does not address paediatric provision or service management issues.

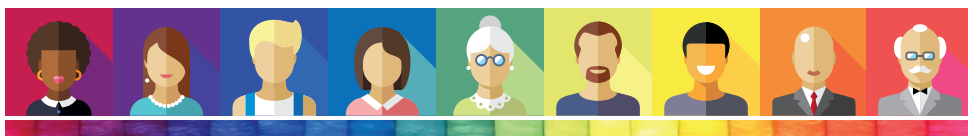
## Accommodation and Travel

The course venue is The Hayes Conference Centre, Swanwick, Alfreton, Derbyshire DE55 1AU. Accommodation costs are not included in the course fee.

Bed and breakfast is available at the Conference Centre at £60 per night en-suite, £45 per night non en-suite (shared bathroom). This is booked on my website with the course registration. Accommodation cannot be booked directly with the venue.

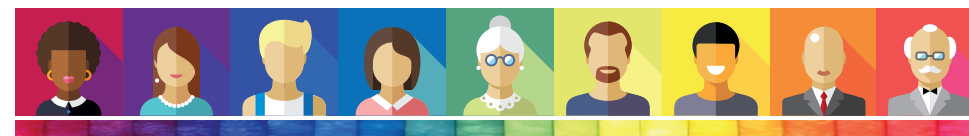
The course fee includes lunch but does not include evening meal. Evening meal on Tuesday and Wednesday is available for residential delegates only, and is included in the accommodation booking at no extra charge.

Leaving the course early on the final afternoon is not advised. Train travel from Alfreton station should be booked for no earlier than 4.30pm, or from Derby station no earlier than 4.45pm.



## Course Faculty

Paul Leeming	National Training Manager Widex UK Ltd
Samantha Tyndall	Regional Manager Oticon Ltd
Leigh Martin	Head of Audiology and Professional Services WS Audiology
Chris Cartwright	Audiology Development Manager Phonak UK
Heather Dowber	NHS Manager GN Hearing UK Ltd
Amy Lennox	Director / Specialised Audiologist Hypatia Training Ltd Hypatia Dizziness & Balance Clinic
Dr Christine DePlacido	Principal Clinical Scientist & Counsellor Fife



# Anne Davies



# AUDIOLOGY

# COURSES

## Registering for the course

To register on the course and book accommodation, please complete the online course registration at:

[www.audiology-courses.co.uk](http://www.audiology-courses.co.uk)

Click on the course title, and then 'register now'.

### Methods of Payment:

**Purchase Order number and invoice address** (supplier: Anne Davies Audiology Courses).

**Cheque** (payable to Anne Davies Audiology Courses).

**Credit / debit card.** Pay online at time of booking.

**Monthly instalments by direct debit (UK customers).** Two payments of 50% over two months, or three payments of 33.3% over three months, interest free.

If you are travelling from overseas and require a visa: once you register and pay, we can provide a letter confirming your place on the course. Please contact us to discuss.

### For enquiries, please contact:

Anne Davies

Principal Clinical Scientist (Audiology)

**Email:** [anne@audiology-courses.co.uk](mailto:anne@audiology-courses.co.uk)

**Tel:** 07985 075428

[www.audiology-courses.co.uk](http://www.audiology-courses.co.uk)

