

Anne Davies



AUDIOLOGY



The **2nd**

Paediatric Hearing Aids: An Introduction

An Introduction / Update on Clinical Skills for Paediatric Habilitation

Comments from previous course delegates

“Very informative and suitable for those with little or lots of experience.”

“Very good facilities. Excellent food and comfortable environment.”

“Thoroughly enjoyed this course. I have learnt so much that I can put into practice.”

Course
fee:
£298

Booking deadline:
Tuesday 16th
March 2021

Tuesday 20th - Thursday 22nd April 2021

The Park Royal Hotel, Stretton, Warrington



This is an introductory course to Paediatric Habilitation. The course is for Audiologists who are beginning to work in paediatric hearing aid clinics, or who would like an update. The course will be of interest to professionals who work with audiologists and who wish to gain an insight into paediatric hearing aid clinics. It is also appropriate as a short focused orientation for non-graduates (including associate and assistant practitioners) who may be assisting in clinics.

The course covers all aspects of routine paediatric hearing aid clinics, including strategies for testing, hearing aid provision with limited threshold information, RECD, verification and outcome measures, wireless accessories, and multi-disciplinary teams.

The course does not cover advanced practice, assessment of complex cases, or paediatric assessment techniques.

On the final morning there will be a workshop on paediatric hearing aid technology and RECD measurements. The following manufacturers will be involved: Oticon, GN Hearing, Phonak - paediatric hearing aid range and features. The Phonak Roger™ system - demonstration and discussion. Otometrics, Interacoustics, Signia - RECD measurements on this equipment.

Accommodation and Travel

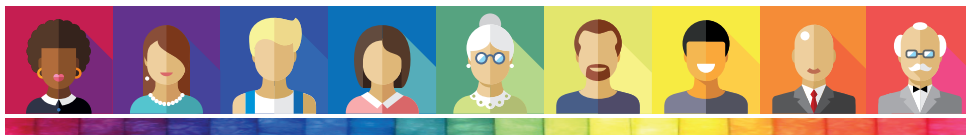
This is a non-residential course; delegates are responsible for booking their own accommodation. Accommodation costs are not included in the course fee.

The course venue is The Park Royal Hotel, Stretton Road, Stretton, Warrington WA4 4NS. This is on the outskirts of Warrington, a 15-20 min taxi ride from Warrington town centre. Booking accommodation close to the venue (rather than commuting from Warrington town centre) is advised. Recommended places to stay are The Park Royal Hotel and the adjacent Premier Inn Warrington South, Tarporley Road, Stretton.

The course fee includes evening dinner on the Tuesday evening of the course.

Driving into and out of Warrington can be subject to considerable delay during rush-hour. We therefore recommend staying over in Warrington rather than driving daily. Where the latter is unavoidable, please leave plenty of time for your journey.

Leaving the course early on the final afternoon is not advised. Train travel from the Warrington stations should be booked for no earlier than 4.30pm.

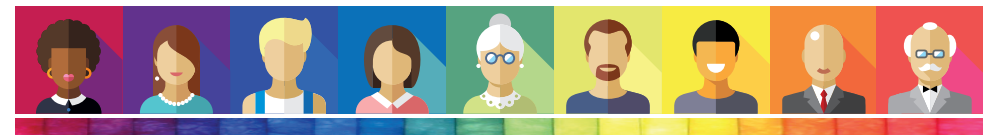


Course Faculty

Georgie Hill	Clinical Scientist, Sheffield Children's Hospital NHS FT, Sheffield
Adam Walker	Clinical Scientist (Audiology), Trafford Hospitals, Manchester University NHS FT, Manchester
Dr Greg Nassar	Principal Clinical Scientist (Audiology), Head of Audiology Services, Trafford Hospitals, Manchester University NHS FT, Manchester
Kathryn Woolley	Head of Audiology, Leighton Hospital, Crewe
Kathryn Lewis	Head of Audiology, Withington Community Hospital, Manchester University NHS FT, Manchester
Ed Brown	Consultant Clinical Scientist (Audiology), Head of Audiology, Royal Hospital, Sunderland
Graham Hilton	Head of Professional Services, Phonak UK
Tony Murphy CEng MIET	Wireless Communications Specialist, Phonak UK
Dr Imran Mulla PhD	Audiology Lead for Education, Bolton Sensory Support

Course Content

Preparing the Parents Difference between Adults and Children Communicating with the Family Multi-Disciplinary Teams	Prescription Formulae RECD and REAR Strategies for Testing Evaluation & Verification Outcome Measures Issues after Fitting Transition Services	Planning the Fitting & Review Limited Threshold Information Wireless Accessories Roger™ System Introduction to Complex Fittings
--	--	--



Anne Davies



AUDIOLOGY

COURSES

Registering for the course

To register on the course, please complete the online course registration at:

www.audiology-courses.co.uk

Click on the course title, and then 'register now'.

Methods of Payment:

Purchase Order number and invoice address (supplier: Anne Davies Audiology Courses).

Cheque (payable to Anne Davies Audiology Courses).

Credit / debit card. Pay online at time of booking.

Monthly instalments by direct debit (UK customers). Two payments of 50% over two months, or three payments of 33.3% over three months, interest free.

If you are travelling from overseas and require a visa: once you register and pay, we can provide a letter confirming your place on the course. Please contact us to discuss.

For enquiries, please contact:

Anne Davies

Principal Clinical Scientist (Audiology)

Email: anne@audiology-courses.co.uk

Tel: 07985 075428

www.audiology-courses.co.uk

