

Anne Davies



AUDIOLOGY



COURSES

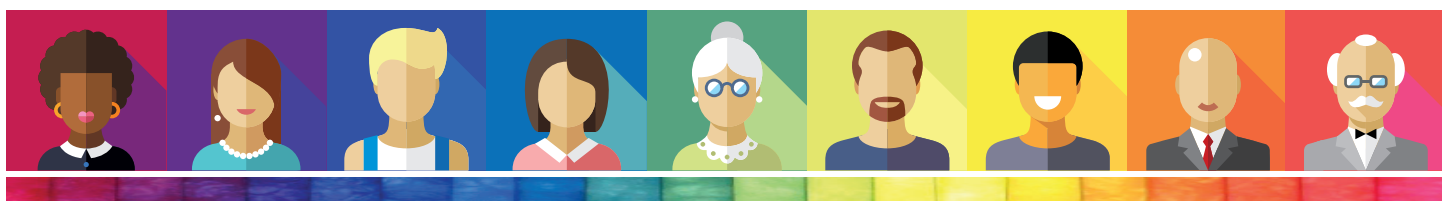
The **2**nd

Paediatric Hearing Aids: An Introduction

An Introduction / Update on Clinical Skills for Paediatric Habilitation

Tuesday 20th - Thursday 22nd April 2021

Course Programme



Tuesday 20th April 2021

9.00	Registration and Coffee
9.15	Welcome and Introduction
9.40	Preparing the Parents
10.15	Difference between Adults and Children
10.45	Introduction to Prescription Formulae
11.05	Break
11.20	Introduction to RECD / REAR Theory
12.10	Real-world RECD, including video and quiz
12.45	Lunch
1.45	Strategies for Testing
2.20	Hearing Aid Provision with Limited Threshold Information
3.10	Break
3.25	Evaluation of Hearing Aids using Speech Testing
4.15	Automatic Verification of Paediatric Fittings with TargetMatch
4.45	Discussion & Questions
5.00	End of Day One

Wednesday 21st April 2021

8.45	Coffee
9.00	Outcome Measures / Questionnaires
10.05	Wireless Accessories
10.50	Break
11.05	Roger™ System
11.40	Communicating with Parents, Children and Young People
12.30	Lunch
1.30	Introduction to Complex Fittings
2.20	Issues after Fitting
3.10	Break
3.25	Multi-Disciplinary Teams
3.55	Transition Services
4.40	Discussion & Questions
5.00	End of Day Two

Thursday 22nd April 2021

9.00	Coffee
9.15	WORKSHOP (Phonak, Oticon, GN Hearing, Otometrics, Interacoustics & Signia)
12.30	Lunch
1.30	Planning the Hearing Aid Fitting & Review
3.05	Course Review & Close
3.40	End of Course



Course Content

Preparing the Parents

In most cases the parents will decide whether the child wears the hearing aid - we need to get this bit right!

Difference between Adults and Children

What makes them different and how does that apply to the child, family and ultimately their hearing aids?

Introduction to Prescription Formulae

A brief history of how the NAL and DSL teams derive their formulae, and discussions around proprietary fitting rules.

Introduction to RECD / REAR Theory

The selection of appropriate parameters in the prescriptive rule and fitting software and the individualisation of the approach through the use of measures such as the Real Ear to Coupler Difference (RECD).

Real-World RECD

Tips and troubleshooting RECD in the clinic.

Strategies for Testing

How to get the most from a testing session to ensure the best possible hearing aid set-up.

Hearing Aid Provision with Limited Threshold Information

Practical considerations when there may be limited or incomplete threshold information. The availability and uncertainty of Auditory Brainstem Response and Behavioural Audiometry thresholds and guidance on how they should be employed.

Evaluation of Hearing Aids using Speech Testing

Things to do with the child and their family once they're wearing their hearing aids, in addition to asking 'How does that sound?'

Automatic Verification of Paediatric Fittings with TargetMatch

This presentation will discuss TargetMatch which is an automated alternative developed by Phonak and Otometrics (now Natus), which results in more accurate matching to target and greater test-retest reliability.

Outcome Measures / Questionnaires

An introduction to the range of outcome measures used to assess hearing aid benefit in children with a particular focus on questionnaires. Including why and when we use these and how these might guide hearing aid management along with some case examples to work through and group activities.

Wireless Accessories

A brief introduction to which devices are out there and when to fit them.

Roger™ System

An introduction to Phonak's Roger™ technology and an overview of the connectivity options.

Communicating with Parents, Children and Young People

Communication skills scenarios and explanation particularly related to hearing aid fitting and reviews. Group work using case studies and examples.

Introduction to Complex Fittings

How to approach the hearing aid fitting when dealing with children with unusual hearing loss configurations or additional needs.

Issues after Fitting

Addressing the needs of children wearing and managing hearing devices following fitting, including maintenance and earpieces; understanding the issues for older children around compliance and helping them in dealing with this. Case studies included.

Multi-Disciplinary Teams

Examples of other professionals that we could (and should!) work with.

Transition Services

Transitioning from the paediatric to the adult service can be a daunting proposition - how can we make this as smooth a process as possible for our patients.

Planning the Hearing Aid Fitting & Review

Why do we plan the session. Examples of case studies and planning for hearing aid fitting and reviews, and specific considerations for children.

Course Faculty

Georgie Hill

Clinical Scientist,
Sheffield Children's Hospital NHS FT, Sheffield

Adam Walker

Clinical Scientist (Audiology),
Trafford Hospitals,
Manchester University NHS FT, Manchester

Dr Greg Nassar

Principal Clinical Scientist (Audiology)
Head of Audiology Services
Trafford Hospitals,
Manchester University NHS FT, Manchester

Kathryn Woolley

Head of Audiology,
Leighton Hospital, Crewe

Kathryn Lewis

Head of Audiology,
Withington Community Hospital,
Manchester University NHS FT, Manchester

Ed Brown

Consultant Clinical Scientist (Audiology),
Head of Audiology,
Royal Hospital, Sunderland

Graham Hilton

Head of Professional Services,
Phonak UK

Tony Murphy CEng MIET

Wireless Communications Specialist,
Phonak UK

Dr Imran Mulla PhD

Audiology Lead for Education,
Bolton Sensory Support

www.audiology-courses.co.uk

