

# Anne Davies



# AUDIOLOGY



The **10<sup>th</sup>**

## Steering a True Course

An Award-Winning Leadership Course,  
Delivered by Senior Leaders in NHS Audiology

### Residential course

Accommodation (bed and breakfast) is available to book, at the additional cost of £70 per night (en-suite)

Course  
fee:  
**£407**

Booking deadline:  
Tuesday 21<sup>st</sup>  
December 2021

Tuesday 1<sup>st</sup> -  
Thursday 3<sup>rd</sup> February 2022

High Leigh Conference Centre, Hoddesdon, Hertfordshire



This course is for anyone in a clinical lead role (public or private sector), who aspires to lead an Audiology service. It is also suitable for those who are managing, developing and leading Audiology services: Heads of Department, Audiology Service Managers, and Team Leaders. The course gives time out to reflect on your skills and self-management, and opportunity for discussion with the speaker faculty in a relaxed setting.

Anne Davies was awarded the Denzil Brooks Trophy from the British Society of Audiology in 2010 for setting up this course. The course is taught by experienced senior leaders in audiology, and provides practical skills on all aspects of running audiology services. The course explores leadership qualities, communication skills, leading a team, business planning, change management, service development, innovation, stress management, and current issues in Audiology.

The course faculty will discuss leadership in a post-covid world, and the approaches necessary to lead in this new more remote / virtual world.

This is an exceptional opportunity to gain resources, tools and insights from key clinical leaders in audiology, who are motivated to pass on what has worked for them.

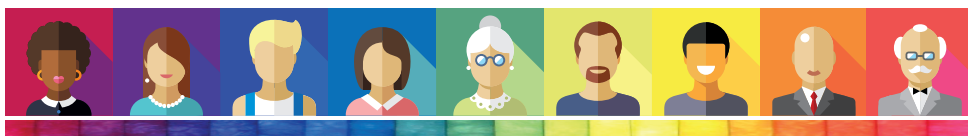
## Accommodation and Travel

The course venue is High Leigh Conference Centre, Lord Street, Hoddesdon, Hertfordshire, EN11 8SG. Accommodation costs are not included in the course fee.

Bed and breakfast is available at the Conference Centre at the discounted rate of £70 per night en-suite. This is booked on my website with the course registration. Accommodation cannot be booked directly with the venue.

The course fee includes lunch but does not include evening meal. Evening meal on Tuesday and Wednesday is available for residential delegates only, and is included in the accommodation booking at no extra charge.

Leaving the course early on the final afternoon is not advised. Train travel from Broxbourne should be booked for no earlier than 4.00pm.



## Course Faculty

<b>Dr Jagjit Sethi</b>	Head of Hearing and Balance Services Clinical Director & Lead Healthcare Scientist for BHFT Berkshire Healthcare NHS Foundation Trust
<b>Ruth Thomsen</b>	Scientific Director NHS England (London Region)
<b>Dr Christine DePlacido</b>	Principal Clinical Scientist & Counsellor, Fife
<b>Dr Rachel McCarthy</b>	Consultant Clinical Scientist, Head of Audiology Royal Berkshire NHS Foundation Trust, Reading
<b>Adam Beckman</b>	Head of Audiology Services University Hospitals Plymouth NHS Trust
<b>Jonathan Parsons</b>	Managing Director, Consultant Clinical Scientist Chime Social Enterprise, Devon
<b>John Day</b>	Clinical Director of Audiology BCU LHB, North Wales
<b>Will Brassington</b>	Consultant Clinical Scientist, Head of Audiology Services University Hospitals, Birmingham
<b>Tony Corcoran</b>	Head of Service (retired), Bournemouth
<b>Dr John Fitzgerald</b>	Consultant Clinical Scientist, Head of Audiological Services Norfolk and Norwich University Hospitals
<b>Anne Davies</b>	Principal Clinical Scientist, Middlesbrough

*"A unique leadership course designed for and delivered by leaders in Audiology, and comes highly recommended."*

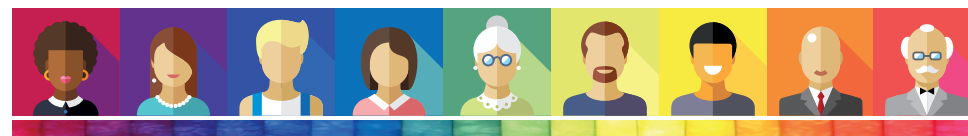
Dr Jagjit Sethi, Head of Hearing and Balance Services, Berkshire Healthcare NHS FT

*"I thoroughly recommend this course for those who want to improve as leaders in our field."*

John Day, Clinical Director of Audiology, BCU LHB, North Wales

*"Providing opportunity to learn from current and past leaders in the field of Audiology, this is a valuable programme for those looking to develop or change their leadership approach."*

Will Brassington, Head of Audiology Services, University Hospitals, Birmingham



# Anne Davies



# AUDIOLOGY

# COURSES

## Registering for the course

To register on the course and book accommodation, please complete the online course registration at:

[www.audiology-courses.co.uk](http://www.audiology-courses.co.uk)

Click on the course title, and then 'register now'.

### Methods of Payment:

**Purchase Order number and invoice address** (supplier: Anne Davies Audiology Courses).

**Cheque** (payable to Anne Davies Audiology Courses).

**Credit / debit card.** Pay online at time of booking.

**Monthly instalments by direct debit (UK customers).** Two payments of 50% over two months, or three payments of 33.3% over three months, interest free.

If you are travelling from overseas and require a visa: once you register and pay, we can provide a letter confirming your place on the course. Please contact us to discuss.

### For enquiries, please contact:

Anne Davies

Principal Clinical Scientist (Audiology)

**Email:** [anne@audiology-courses.co.uk](mailto:anne@audiology-courses.co.uk)

**Tel:** 07985 075428

[www.audiology-courses.co.uk](http://www.audiology-courses.co.uk)

