

Anne Davies



AUDIOLOGY



COURSES

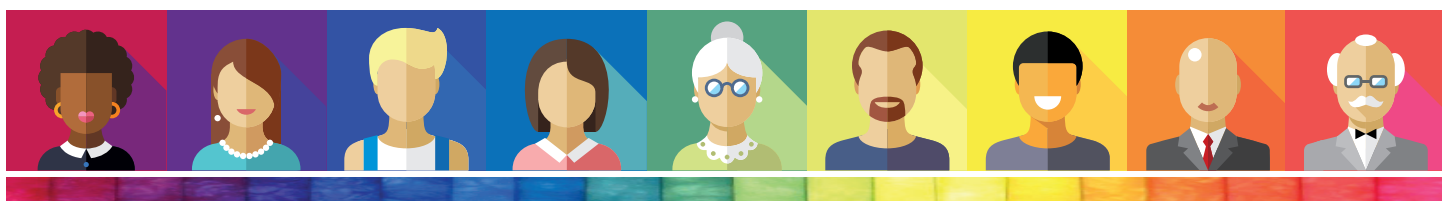


Steering a True Course

An Award-Winning Leadership Course,
Delivered by Senior Leaders in NHS Audiology

Tuesday 1st - Thursday 3rd February 2022

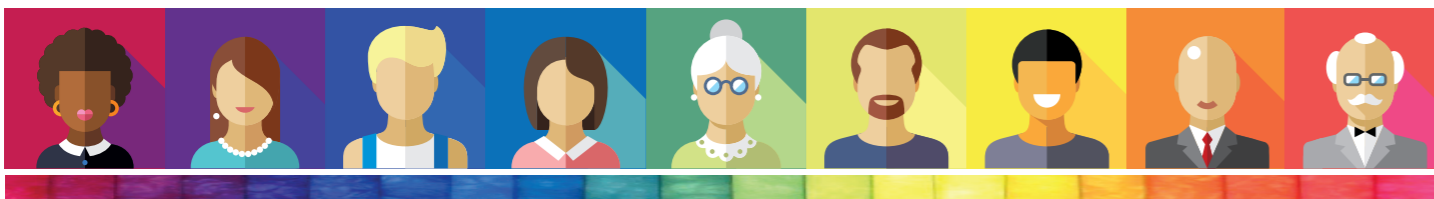
Course Programme



Tuesday 1st February 2022

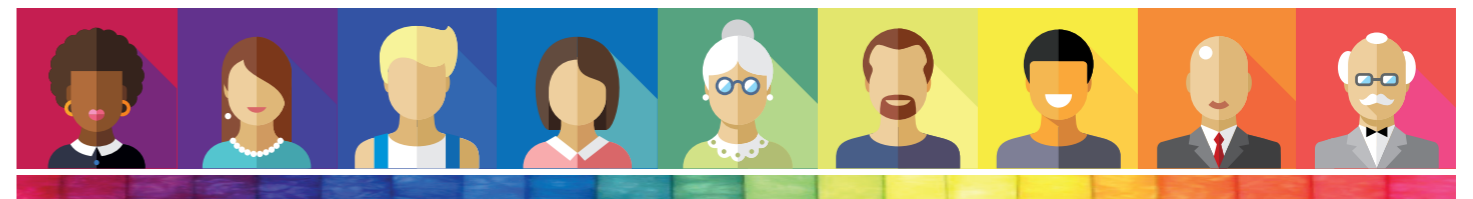
8.45am	Registration and Coffee
9.00am	Welcome and Introduction to the Course
9.15am	Dr Jagjit Sethi Consultant Clinical Scientist, Head of Hearing and Balance Services, Clinical Director & Lead Healthcare Scientist for BHFT Berkshire Healthcare NHS Foundation Trust Into the Labyrinth of UK Health and Social Care
10.15am	Ruth Thomsen Scientific Director NHS England (London Region) Successful Outcomes Through Changing Mindsets
11.15am	Coffee Break
11.30am	Dr Christine DePlacido Principal Clinical Scientist & Counsellor, Fife Maintaining Healthy Work Relationships - What Would Freud Do?
12.30pm	Lunch
1.30pm	Ruth Thomsen Scientific Director NHS England (London Region) Changing Mindsets: Workshop
2.30pm	Dr Rachel McCarthy Consultant Clinical Scientist, Head of Audiology Royal Berkshire NHS Foundation Trust, Reading Find Time to Lead: Dealing with the Nuts and Bolts
3.30pm	Coffee Break
3.45pm	Adam Beckman Head of Audiology Services, University Hospitals Plymouth NHS Trust Quality
5.00pm	Dr Jagjit Sethi Consultant Clinical Scientist, Head of Hearing and Balance Services, Clinical Director & Lead Healthcare Scientist for BHFT Berkshire Healthcare NHS Foundation Trust Mindfulness
5.30pm	Close of day

Evening meal (6.30pm) on Tuesday and Wednesday evening is included for those who are staying at the Conference Centre.



Wednesday 2nd February 2022

9.00am	Coffee
9.15am	Jonathan Parsons Managing Director, Consultant Clinical Scientist Chime Social Enterprise, Exeter Leadership - Some of What it Takes
10.15am	John Day Clinical Director of Audiology Betsi Cadwaladr University Health Board, North Wales Strategic Management in Audiology - Recognising and Influencing the Bigger Picture
11.15am	Coffee Break
11.30am	Will Brassington Consultant Clinical Scientist, Head of Audiology Services University Hospitals, Birmingham Influencing Change: A Scientific Approach to Leadership
12.30pm	Lunch
1.30pm	Tony Corcoran Head of Service (retired), Bournemouth Provider Driven Service Development
2.30pm	Dr John Fitzgerald Consultant Clinical Scientist, Head of Audiological Services Norfolk and Norwich University Hospitals Making Service Development Happen
3.30pm	Coffee break
3.45pm	Jonathan Parsons Managing Director, Consultant Clinical Scientist Chime Social Enterprise, Exeter From NHS Service to Social Enterprise - Some Reflections on the Journey and Destination
4.45pm	Dr Christine DePlacido Principal Clinical Scientist & Counsellor, Fife Relaxation: A Taster Session
5.30pm	Close of day



Thursday 3rd February 2022

9.00am	Coffee
9.15am	Tony Corcoran Head of Service (retired), Bournemouth Innovation
10.15am	Tony Corcoran Head of Service (retired), Bournemouth Epidemiology
10.35am	Anne Davies Principal Clinical Scientist, Middlesbrough Time Management
11.15am	Coffee Break
11.30am	Dr Christine DePlacido Principal Clinical Scientist & Counsellor, Fife Preventing Burnout
12.30pm	Lunch
1.30pm	Will Brassington Consultant Clinical Scientist, Head of Audiology Services University Hospitals, Birmingham Leadership - The Uncut Guide!
2.30pm	Coffee, Discussion, Feedback on Course
3.30pm	Close of Course

Chairs of Course

The Speaker Faculty
and
Amy Lennox
Director / Specialised Audiologist
Hypatia Training Ltd,
Hypatia Dizziness & Balance Clinic

www.audiology-courses.co.uk

