

Anne Davies



AUDIOLOGY



The **3rd**

Sharing The News (Gwen Carr)

Communicating Effectively with Families at the Time of Early Identification of Deafness and the Period Following

The course is led by Gwen Carr & Adam Walker, working with a team of professional actors.

The course is in its 17th year, and is now a collaboration between Gwen Carr and Anne Davies Audiology Courses.

Course
fee:
£395

Booking deadline:
Tuesday 22nd
March 2022

Tuesday 26th - Wednesday 27th April 2022

Pendulum Hotel & Manchester Conference Centre,
Sackville Street, Manchester



This unique and highly regarded 2-day course is led by Gwen Carr and Adam Walker, working with a team of experienced professional actors. The course is in its 17th year, and was hosted by NHSP from 2005 until 2014. This course is now a collaboration between Gwen Carr and Anne Davies Audiology Courses.

How news of deafness is communicated, and information is shared, can have a significant impact on families in terms of their adjustment to their baby's diagnosis and their engagement and involvement with services.

The course is research based and evidence informed. It is designed for audiologists, medical staff, and other professionals who are involved with families at the time of early identification of deafness and the period following this. The course is highly interactive, and includes experiential practice with professional actors as well as opportunity to hear and discuss real family experiences.

"The single most effective predictor of a newly identified child's success is the meaningful and effective involvement of his or her parents and family." (Yoshinaga-Itano, 2000)

Accommodation and Travel

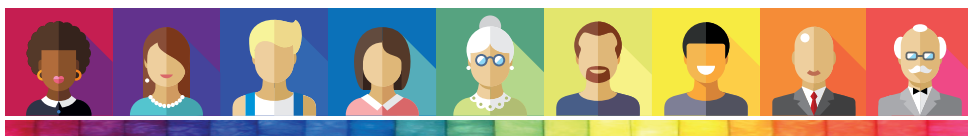
This is a non-residential course; delegates are responsible for booking their own accommodation. Accommodation costs are not included in the course fee.

The course venue is The Pendulum Hotel & Manchester Conference Centre, Sackville Street, Manchester M1 3BB. This is in central Manchester, 10 mins walk from Manchester Piccadilly train station. Places to stay include Holiday Inn Express Manchester City Centre, 2 Oxford Road (10 mins walk) and Premier Inn Manchester City Centre Princess Street, 2 Brook Street (5 mins walk).

Car parking is 5 mins walk from the venue, at Manchester Circle Square NCP Multi-Storey Car Park M1 7ED. The cost is £22.45 for 8-24 hours. This car park is below the Premier Inn Manchester City Centre Hotel; a discounted rate of £10 per 24 hours is available for hotel guests. If travelling to / from Manchester Airport, we recommend the train to Manchester Piccadilly, rather than taxi.

The course fee includes lunch and refreshments. Evening meals are not included.

Leaving the course early on the final afternoon is not advised. Train travel from Manchester Piccadilly train station should be booked for no earlier than 5.00pm.



Gwen Carr

Consultant in Early Hearing Detection and Intervention and Family Centred Practice
Honorary Senior Research Associate, The University College London Ear Institute

Gwen's current work focuses on research, service development and training which actively promotes evidence-based family centred approaches to service provision both in the UK and overseas. She serves as a member of the executive group for the International conferences on Family Centred Early Intervention; a member of the Quality and Clinical Governance Group of the Wales Newborn Hearing Screening Programme and a member of the Global Research on Developmental Disabilities Collaborative Group.

Gwen developed this course originally as an NHSP / NDCS collaboration and has evolved and delivered it over many years in a variety of international contexts.

Learning Outcomes

The course will run from 10.00am to 4.30pm each day.

By the end of the programme, delegates will have:

An understanding of the importance of effective communication with parents / families of early identified deaf children, from an evidence-based prospective.

An understanding of the key elements of effective listening and information sharing in clinical encounters.

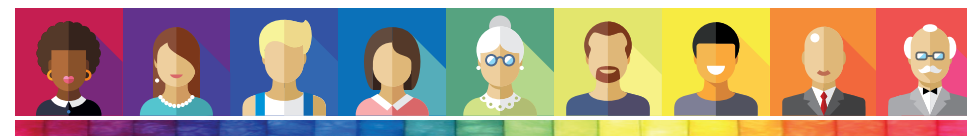
An appreciation of how stress and different emotional states impact how people receive and process information.

An understanding of the varied ways in which parents adjust and adapt to their baby's diagnosis.

Had an opportunity to practice skills hands on, in group settings with professional actors who have over 15 years' experience in this specific area of work.

Heard the experiences of parents and families of the care pathway, from screening through to audiological management and early intervention.

Developed and practised strategies for effective and responsive communication in challenging situations.



Anne Davies



AUDIOLOGY

COURSES

Registering for the course

To register on the course, please complete the online course registration at:

www.audiology-courses.co.uk

Click on the course title, and then 'register now'.

Methods of Payment:

Purchase Order number and invoice address (supplier: Anne Davies Audiology Courses).

Cheque (payable to Anne Davies Audiology Courses).

Credit / debit card. Pay online at time of booking.

Monthly instalments by direct debit (UK customers). Two payments of 50% over two months, or three payments of 33.3% over three months, interest free.

If you are travelling from overseas and require a visa: once you register and pay, we can provide a letter confirming your place on the course. Please contact us to discuss.

For enquiries, please contact:

Anne Davies

Principal Clinical Scientist (Audiology)

Email: anne@audiology-courses.co.uk

Tel: 07985 075428

www.audiology-courses.co.uk

