

# Anne Davies

# AUDIOLOGY



## COURSES

The **8<sup>th</sup>**

## Hearing Aids: The Inside Track

An Advanced Course on Hearing Aid Technology,  
Verification and Validation, and Management of  
Non-Routine / Complex Hearing Loss

### Residential course

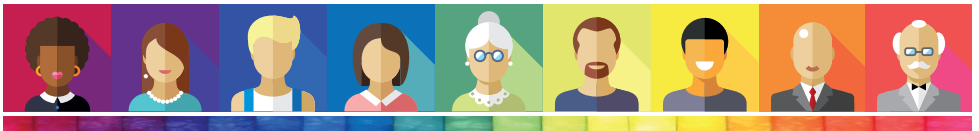
Accommodation is available at the Conference Centre, at the additional cost of £70 per night. This includes bed and breakfast, and evening meals.

Course  
fee:  
**£316**

Booking deadline:  
Tuesday 20<sup>th</sup>  
June 2023

Tuesday 25<sup>th</sup> - Thursday 27<sup>th</sup> July 2023

The Hayes Conference Centre, Alfreton, Derbyshire



This advanced hearing aid course is a unique collaboration with Oticon, Phonak, GN Hearing, Signia, Widex, Interacoustics, and Advanced Bionics. The course is for senior Audiologists (or those wishing to develop their skills) and focuses on practical clinical skills for managing non-routine and complex hearing loss.

The course programme covers compression strategies, prescriptive formulae, acoustics and open fittings, real ear measurement signals and protocols, speech mapping, speech tests, speech-in-noise assessment, outcomes and benefit, aural rehabilitation, connectivity, e-health, ear to ear processing, and hearing aid apps. Advanced practice is discussed for non-standard audiogram configurations, asymmetrical and single sided deafness, severe-profound and challenging hearing losses, and fitting musicians. There is emphasis on patient centred care, and talks throughout the course address key principles in hearing loss rehabilitation.

There is an evening workshop on the Wednesday (7.30pm-9.00pm), which is hands-on discussion and practice covering real ear measurement, speech mapping, test box and advanced verification. Unity, Aurical and Affinity Compact systems will all be available.

There is no other course which brings together so many manufacturers to provide generic skills training. This is an exceptional opportunity to learn from expert clinical trainers across the hearing aid industry and to discuss best practice.

The course does not address paediatric provision or service management issues.

## Accommodation and Travel

The course venue is The Hayes Conference Centre, Swanwick, Alfreton, Derbyshire DE55 1AU. Accommodation costs are not included in the course fee.

The on-site course accommodation is now fully booked. You can still book to attend the course, however you will need to make your own arrangements regarding accommodation. There are a number of hotels close by, including Premier Inn.

Leaving the course early on the final afternoon is not advised. Train travel from Alfreton station should be booked for no earlier than 4.30pm, or from Derby station no earlier than 4.45pm.

## Course Faculty

**Heather Dowber**

Head of Market Access UK  
[GN Hearing UK Ltd](#)

**Sharon Sangha  
& Eifat Khan**

NHS Regional Managers  
[Oticon Ltd](#)

**Paul Leeming**

National Training Manager  
[Widex UK Ltd](#)

**Leigh Martin**

Director of Interacoustics Academy  
[Interacoustics A/S](#)

**Graham Hilton**

Director of Audiology  
[Phonak UK](#)

**Nicole da Rocha**

Speech Therapist and Audiologist  
Customer Engagement Specialist, UK & Eire  
[Advanced Bionics AG](#)

**Chris Cartwright**

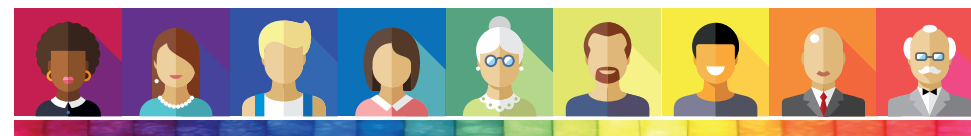
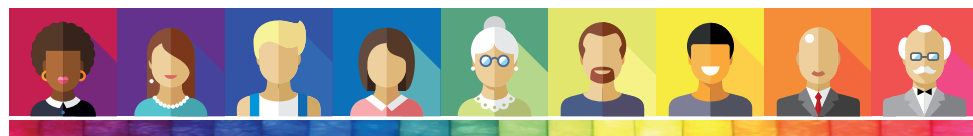
Director of Training,  
The Audiology Academy  
[Hear in Wimbourne Ltd, Wolverhampton](#)

**Amy Lennox**

Director / Specialised Audiologist  
[Hypatia Training Ltd](#)  
[Hypatia Dizziness & Balance Clinic](#)

**Dr Christine DePlacido**

Principal Clinical Scientist & Counsellor  
[Fife](#)



# Anne Davies

# AUDIOLOGY



## Registering for the course

To register on the course and book accommodation, please complete the online course registration at:

[www.audiology-courses.co.uk](http://www.audiology-courses.co.uk)

Click on the course title, and then 'register now'.

### Methods of Payment:

**Purchase Order number and invoice address** (supplier: Anne Davies Audiology Courses).

**Cheque** (payable to Anne Davies Audiology Courses).

**Credit / debit card.** Pay online at time of booking.

**Monthly instalments by direct debit (UK customers).** Two payments of 50% over two months, or three payments of 33.3% over three months, interest free.

If you are travelling from overseas and require a visa: once you register and pay, we can provide a letter confirming your place on the course. Please contact us to discuss.

### For enquiries, please contact:

Anne Davies

Principal Clinical Scientist (Audiology)

**Email:** [anne@audiology-courses.co.uk](mailto:anne@audiology-courses.co.uk)

**Tel:** 07985 075428

[www.audiology-courses.co.uk](http://www.audiology-courses.co.uk)

