

Anne Davies



AUDIOLOGY



COURSES

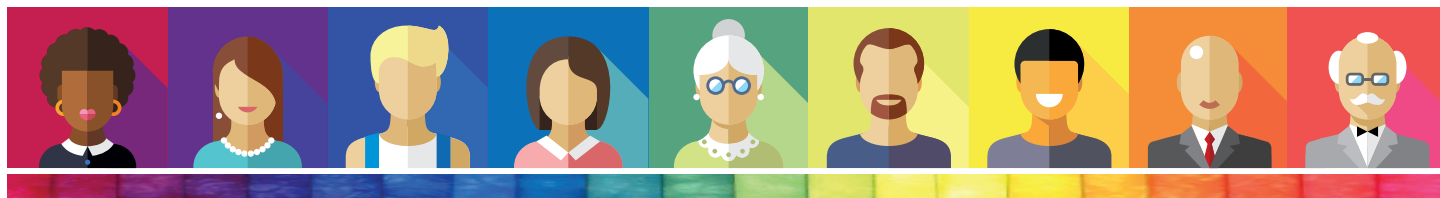


Steering a True Course

An Award-Winning Leadership Course,
Delivered by Senior Leaders in NHS Audiology

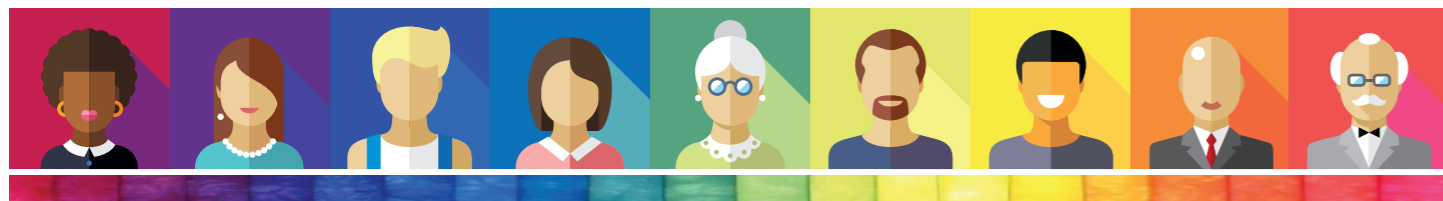
Tuesday 30th January -
Thursday 1st February 2024

Course Programme



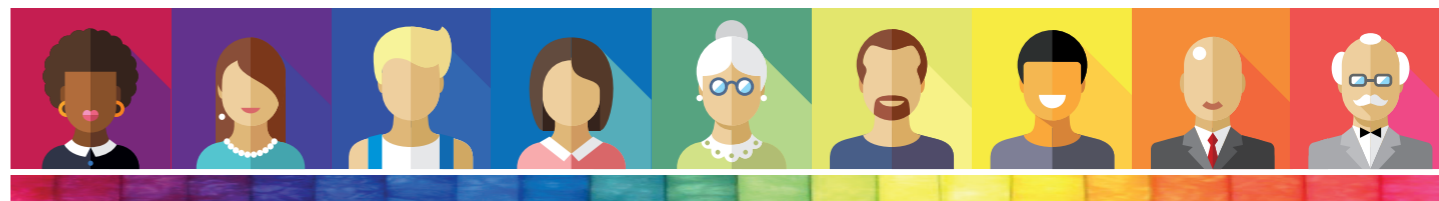
Tuesday 30th January 2024

from 8.30am	Arrival and Coffee
9.00am	Welcome and Introduction to the Course
9.15am	Dr Jagjit Sethi Regional Chief Healthcare Scientist – NHS E East of England Regional Clinical Advisor for Physiological Sciences - NHS E South East Into the Labyrinth of UK Health and Social Care
10.15am	Tony Corcoran Head of Service (retired), Bournemouth Epidemiology
10.45am	Anne Davies Principal Clinical Scientist, Middlesbrough Time Management
11.15am	Coffee Break
11.30am	Ruth Thomsen Scientific Director NHS England (London Region) Compassionate Leadership in Complex Times
12.30pm	Lunch
1.30pm	Ruth Thomsen Scientific Director NHS England (London Region) Compassionate Leadership in Complex Times
2.30pm	Dr Christine DePlacido Principal Clinical Scientist & Counsellor, Fife Preventing Burnout
3.30pm	Coffee Break
3.45pm	Adam Beckman Head of Audiology Services, University Hospitals Plymouth NHS Trust Quality
5.00pm	Dr Jagjit Sethi Regional Chief Healthcare Scientist – NHS E East of England Regional Clinical Advisor for Physiological Sciences - NHS E South East Mindfulness
5.30pm	Close of day
6.30pm	Evening meal, in the hotel restaurant



Wednesday 31st January 2024

9.00am	Coffee
9.15am	Jonathan Parsons Managing Director, Consultant Clinical Scientist Chime Social Enterprise, Exeter Leadership - Some of What it Takes
10.15am	John Day Clinical Director of Audiology Betsi Cadwaladr University Health Board, North Wales Strategic Management in Audiology - Recognising and Influencing the Bigger Picture
11.15am	Coffee Break
11.30am	Will Brassington Consultant Clinical Scientist, Head of Audiology Services University Hospitals, Birmingham Influencing Change: A Scientific Approach to Leadership
12.30pm	Lunch
1.30pm	Tony Corcoran Head of Service (retired), Bournemouth Provider Driven Service Development
2.30pm	Dr Christine DePlacido Principal Clinical Scientist & Counsellor, Fife Maintaining Healthy Work Relationships - What Would Freud Do?
3.30pm	Coffee break
3.45pm	Jonathan Parsons Managing Director, Consultant Clinical Scientist Chime Social Enterprise, Exeter From NHS Service to Social Enterprise - Some Reflections on the Journey and Destination
4.45pm	Dr Christine DePlacido Principal Clinical Scientist & Counsellor, Fife Relaxation: A Taster Session
5.30pm	Close of day No evening meal provided; please make your own arrangements



Thursday 1st February 2024

9.00am	Coffee
9.15am	Dr Rachel McCarthy Consultant Clinical Scientist, Head of Audiology Royal Berkshire NHS Foundation Trust, Reading Deconstruct Your Service, Build a Case
10.15am	Tony Corcoran Head of Service (retired), Bournemouth Innovation
11.15am	Coffee Break
11.30am	Dr Rachel McCarthy Consultant Clinical Scientist, Head of Audiology Royal Berkshire NHS Foundation Trust, Reading Clinical Governance
12.30pm	Lunch
1.30pm	Will Brassington Consultant Clinical Scientist, Head of Audiology Services University Hospitals, Birmingham Leadership - The Uncut Guide!
2.30pm	Coffee, Discussion, Closing Plenary Session
3.15pm	Close of Course

Chairs of Course

The Speaker Faculty
and
Amy Lennox
Director / Specialised Audiologist
Hypatia Training Ltd,
Hypatia Dizziness & Balance Clinic

www.audiology-courses.co.uk

