

# Anne Davies



# AUDIOLOGY



The **8<sup>th</sup>**

## Sharing The News (Gwen Carr)

Communicating Effectively with Families Around the Time of Early Identification of Deafness and Ongoing Paediatric Care

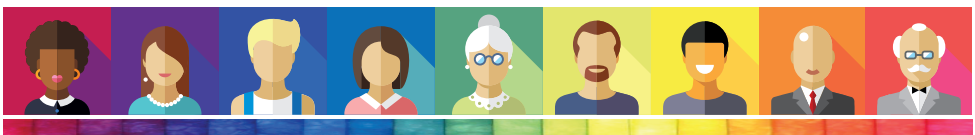
This course, in it's 19th year, is the only course specifically tailored to childhood deafness. It includes face-to-face experiential practice with professional actors, as well as opportunity to hear and discuss real family experiences.

Course  
fee:  
**£455**  
+VAT

Booking deadline:  
Tuesday 23<sup>rd</sup>  
July 2024

Tuesday 27<sup>th</sup> -  
Wednesday 28<sup>th</sup> August 2024

Novotel Manchester Centre Hotel, Manchester



**This unique, family centred, and highly regarded course is led by Gwen Carr, working with experienced professional actors. The course, in its 19th year, is the only course specifically tailored to childhood deafness. It is informed by research in the field and by the lived experience of parents of deaf children in the UK and internationally.**

How news of deafness is communicated and information is shared can have a significant and enduring impact on families in terms of their adjustment to their baby's diagnosis, their engagement and involvement with services, and child and family wellbeing.

The course is designed for professionals who are involved with families at the time of early identification of deafness and follow-up. The course is highly interactive, and includes face-to-face experiential practice with professional actors as well as opportunity to hear and discuss real family experiences.

The course focuses on the importance of establishing partnership and engagement with families.

"The single most effective predictor of a newly identified child's success is the meaningful and effective involvement of his or her parents and family." (Yoshinaga-Itano, 2000)

## Accommodation and Travel

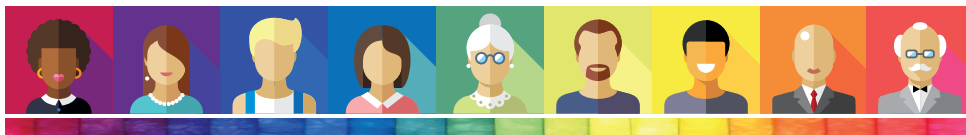
This is a non-residential course; delegates are responsible for booking their own accommodation. Accommodation costs are not included in the course fee.

The course venue is Novotel Manchester Centre Hotel, Dickinson Street, Manchester, M1 4LX. This is in central Manchester, within walking distance from all city centre train stations. The Novotel Hotel offers a discounted bed and breakfast rate for course attendees; please contact us for details.

A 25% discount is available on a first come first served basis for car parking at the Q-Park Piazza car park, St James Street, M1 4LX (adjacent to the hotel) and at Q-Park First Street, M1 4FN (10 mins walk from the hotel). Please contact us for the discount code to book this.

The course fee includes lunch and refreshments. Evening meals are not included.

Leaving the course early on the final afternoon is not advised. Train travel should be booked for no earlier than 5.00pm.



## Gwen Carr

Consultant in Early Hearing Detection and Intervention and Family Centred Practice  
Honorary Senior Research Associate, The University College London Ear Institute

Gwen's current work focuses on research, service development and training which actively promotes evidence-based family centred approaches to service provision both in the UK and overseas. She serves as a member of the executive group for the International conferences on Family Centred Early Intervention; a member of the Quality and Clinical Governance Group of the Wales Newborn Hearing Screening Programme and a member of the Global Research on Developmental Disabilities Collaborative Group.

Gwen developed this course originally as an NHSP / NDCS collaboration and has evolved and delivered it over many years in a variety of international contexts.

## Learning Outcomes

By the end of the programme, delegates will have:

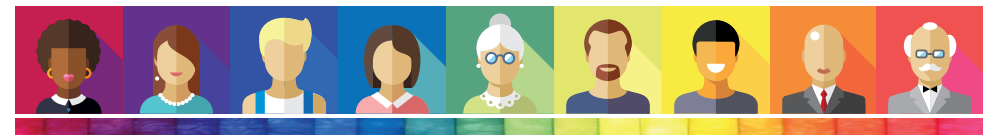
An understanding of the importance of effective communication with parents / families of early identified deaf children, from an evidence-based perspective.

An understanding of the key elements of effective listening and information sharing in clinical encounters.

An appreciation of how different emotional states affect how people receive and process information and the varied ways in which parents adjust to their baby's diagnosis.

Developed and practised strategies and skills for effective and responsive communication in challenging situations, working in group settings with experienced professional actors.

Heard and discussed parents' experiences of their screening and diagnostic journeys.



# Anne Davies



# AUDIOLOGY

# COURSES

## Registering for the course

To register on the course, please complete the online course registration at:

[www.audiology-courses.co.uk](http://www.audiology-courses.co.uk)

Click on the course title, and then 'register now'.

### Methods of Payment:

**Purchase Order number and invoice address** (supplier: Anne Davies Audiology Courses).

**Cheque** (payable to Anne Davies Audiology Courses).

**Credit / debit card.** Pay online at time of booking.

**Monthly instalments by direct debit (UK customers).** Two payments of 50% over two months, or three payments of 33.3% over three months, interest free.

If you are travelling from overseas and require a visa: once you register and pay, we can provide a letter confirming your place on the course. Please contact us to discuss.

### For enquiries, please contact:

Anne Davies

Principal Clinical Scientist (Audiology)

**Email:** [anne@audiology-courses.co.uk](mailto:anne@audiology-courses.co.uk)

**Tel:** 07985 075428

[www.audiology-courses.co.uk](http://www.audiology-courses.co.uk)

