

# Anne Davies



# AUDIOLOGY



The **9<sup>th</sup>**

## Hearing Aids: The Inside Track

An Advanced Course on Hearing Aid Technology,  
Verification and Validation, and Management of  
Non-Routine / Complex Hearing Loss

### Comments from previous course delegates

“A brilliant course, and very well run.”

“A fantastic refresher and update.”

“Speakers were all enthusiastic, helpful  
and approachable - inspiring to be around  
their passion for audiology.”

Course  
fee:  
**£336**  
+VAT

Booking deadline:  
Tuesday 28<sup>th</sup>  
May 2024

Tuesday 2<sup>nd</sup> - Thursday 4<sup>th</sup> July 2024

The Park Royal Hotel, Stretton, Warrington



This is a unique collaboration with Oticon, Phonak, GN Hearing, Signia, Widex, Interacoustics, The Audiology Academy and Hypatia Training. The course is for senior Audiologists (or those wishing to develop their skills) and focuses on practical clinical skills for managing non-routine and complex hearing loss.

This is an exceptional opportunity to learn from expert clinical trainers. The course content includes compression strategies, acoustics and open fittings, speech mapping, speech tests, speech-in-noise assessment, outcomes and benefit, connectivity, e-health, and ear to ear processing. Advanced practice is discussed for non-standard audiogram configurations, asymmetrical and single sided deafness, severe-profound and challenging hearing losses, and fitting musicians. There is emphasis on patient centred care and on key principles in hearing loss rehabilitation.

There is an evening workshop on the Wednesday (7.30pm-9.00pm), which is hands-on discussion and practice covering real ear measurement, speech mapping, test box and advanced verification. Unity, Aurical and Affinity Compact systems will all be available.

Attendees should be familiar with routine hearing aid fittings and real ear measurement, and have experience of basic counselling skills such as reflection, paraphrasing, and asking open questions. Although the course does not specifically address paediatric provision, such as RECD or paediatric outcome measures, the course faculty includes this expertise and they are happy to discuss this individually.

## Accommodation and Travel

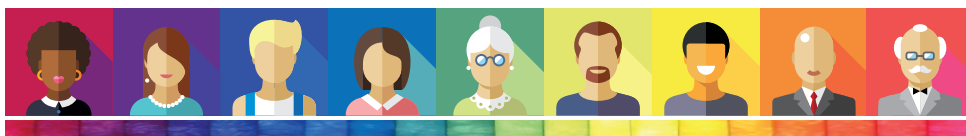
This is a non-residential course; delegates are responsible for booking their own accommodation. Accommodation costs are not included in the course fee.

The course venue is The Park Royal Hotel, Stretton Road, Stretton, Warrington WA4 4NS. This is on the outskirts of Warrington, a 15-20 min taxi ride from Warrington town centre. The Park Royal Hotel offers a discounted bed and breakfast rate for course attendees; please contact us for details.

The course fee includes evening meal on the Wednesday evening of the course at 6.00pm. On Tuesday evening, please make your own arrangements for evening meal.

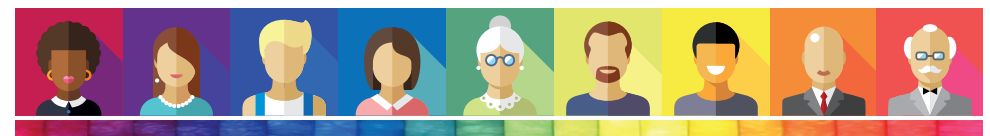
Driving into and out of Warrington can be subject to considerable delay during rush-hour. We therefore recommend staying over, rather than driving daily to the course. Where the latter is unavoidable, please leave plenty of time for your journey.

Leaving the course early on the final afternoon is not advised. Train travel from the Warrington stations should be booked for no earlier than 4.30pm.



## Course Faculty

Heather Dowber	Head of Market Access UK <a href="#">GN Hearing UK Ltd</a>
Samantha Tyndall	Regional Manager <a href="#">Oticon Ltd</a>
Julia Van Huyssteen	Signia Head of Audiology, UK & Ireland <a href="#">Signia</a>
Paul Leeming	National Training Manager <a href="#">Widex UK Ltd</a>
Leigh Martin	Director of Interacoustics Academy <a href="#">Interacoustics A/S</a>
Graham Hilton	Director of Audiology <a href="#">Phonak UK</a>
Chris Cartwright	Director of Training, The Audiology Academy <a href="#">Hear in Wimbourne Ltd, Wolverhampton</a>
Amy Lennox	Director / Specialised Audiologist <a href="#">Hypatia Training Ltd</a> <a href="#">Hypatia Dizziness &amp; Balance Clinic</a>
Dr Christine DePlacido	Principal Clinical Scientist & Counsellor <a href="#">Fife</a>



# Anne Davies



# AUDIOLOGY

# COURSES

## Registering for the course

To register on the course and book accommodation, please complete the online course registration at:

[www.audiology-courses.co.uk](http://www.audiology-courses.co.uk)

Click on the course title, and then 'register now'.

### Methods of Payment:

**Purchase Order number and invoice address** (supplier: Anne Davies Audiology Courses).

**Cheque** (payable to Anne Davies Audiology Courses).

**Credit / debit card.** Pay online at time of booking.

**Monthly instalments by direct debit (UK customers).** Two payments of 50% over two months, or three payments of 33.3% over three months, interest free.

If you are travelling from overseas and require a visa: once you register and pay, we can provide a letter confirming your place on the course. Please contact us to discuss.

### For enquiries, please contact:

Anne Davies

Principal Clinical Scientist (Audiology)

**Email:** [anne@audiology-courses.co.uk](mailto:anne@audiology-courses.co.uk)

**Tel:** 07985 075428

[www.audiology-courses.co.uk](http://www.audiology-courses.co.uk)

