

# Anne Davies



# AUDIOLOGY



COURSES

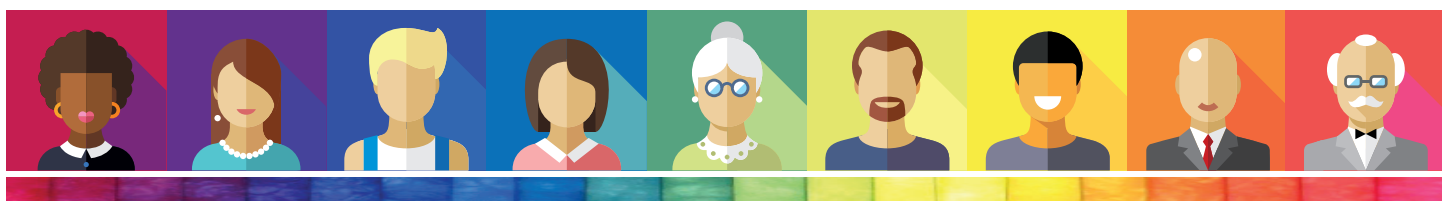


## Paediatric Assessment: A Refresher Course

An Introduction / Update for Behavioural Testing in Paediatric Audiology

Tuesday 12<sup>th</sup> - Thursday 14<sup>th</sup> November 2024

## Course Programme



## Tuesday 12<sup>th</sup> November 2024

from 8.30	<b>Arrival and Coffee</b>
9.00	Welcome
9.10	Course Introduction
9.30	Paediatric Development
10.35	<b>Break</b>
10.50	History Taking
11.25	Calibration Essentials
12.30	<b>Lunch</b>
1.30	Children's Safeguarding Issues
2.20	Report Writing and Record Keeping
2.55	VRA Basics
3.45	<b>Break</b>
4.00	VRA Beyond the Basics
4.50	Play Audiometry
5.20	Questions and Discussion
5.30	<b>End of Day One</b>
6.00	<b>Evening meal, in the hotel restaurant</b>

## Wednesday 13<sup>th</sup> November 2024

8.45	<b>Coffee</b>
9.00	Introduction to ANSD and APD
10.05	Speech Discrimination Testing
11.10	<b>Break</b>
11.25	Non-Organic Hearing Loss
12.00	OAE, Tympanometry and Reflexes
12.45	<b>Lunch</b>
1.45	Planning the Session
3.30	<b>Break</b>
3.45	Syndromes and Disorders
5.05	Distraction Testing
5.35	<b>End of Day Two</b>
	<b>No evening meal provided; please make your own arrangements</b>

## Thursday 14<sup>th</sup> November 2024

8.45	<b>Coffee</b>
9.00	Management Decisions
10.05	Communicating with Parents
10.50	<b>Break</b>
11.05	Introduction to Complex Cases
11.55	Case Presentations
12.30	<b>Lunch</b>
1.30	Workshop and Discussion
3.30	Closing Plenary Session
4.00	<b>End of Course</b>



## Course Content

### Paediatric Development

A whistle-stop tour of stages in child development assessed by paediatricians as part of a paediatric history (including aspects of Down syndrome), which have implications for audiology testing.

### History Taking

The essentials of a good history, why and when. Appropriate questions to ask. Example of history taking in clinic.

### Calibration Essentials

The importance of calibration for paediatric audiology specifically.

### Children's Safeguarding Issues

Raising awareness of child protection issues in relation to audiology.

### Report Writing and Record Keeping

Essence and structure of a good report. Why we write them, who to, and what should they inform the recipient about.

### VRA Basics

Underlying principles of Visual Reinforcement Audiometry (VRA), room set-up, equipment. The practical procedure of performing VRA in the soundfield.

### VRA Beyond the Basics

The challenges whilst performing VRA; tactics and good practice to obtain reliable results. The use of insert earphones and bone conductor transducers. Interpretation of VRA results.

### Play Audiometry

The requirements of the test, environment, and equipment. The suitability of play audiometry and the techniques, procedure and results. This is supported by a video demonstration.

### Introduction to ANSD and APD

A basic introduction to these conditions, diagnosis and management, case studies.

### Speech Discrimination Testing

The various types of speech tests available. Appropriate tests for developmental age. Examples of live test in a clinic.

### Non-Organic Hearing Loss

A brief overview of assessment options and test strategy, when managing children who present with non-organic hearing loss.

### OAE, Tympanometry and Reflexes

Test protocols, parameters and pitfalls. The difference between standard and high frequency tympanometry testing and results.

### Planning the Session

Why and when do we plan, using information from the referral and history, deciding which tests to use, interactive group work.

### Syndromes and Disorders

A review of causes of deafness including syndromes, infections and other disorders affecting hearing.

### Distraction Testing

The orienting reflex and the most appropriate sounds to evoke a response. Criteria for testing, equipment required, frequencies produced, room set-up and pitfalls.

### Management Decisions

Factors to be considered when formulating management plans. Discussion of case histories and management options.

### Communicating with Parents

Communications skills, scenarios and group work on explaining different results.

### Introduction to Complex Cases

Tips and tactics to get the most out of an assessment when testing is more complex or challenging than expected.

### Case Presentations

Examples of when to change how we assess and adapt when faced with more challenging cases in clinic.

### Workshop and Discussion

Hands-on work in small groups.

## Course Faculty

### Georgie Swainson

Clinical Scientist  
Sheffield Children's Hospital NHS FT, Sheffield

### Dr Greg Nassar

Consultant Clinical Scientist  
Head of Audiology Services  
Trafford Hospitals,  
Manchester University NHS FT, Manchester

### Dr Trevor Foster

Clinical Lead (Paediatric Audiology)  
James Cook University Hospital, Middlesbrough

### Ed Brown

Consultant Clinical Scientist  
Head of Audiology (retired)  
Sunderland

### Louise Hart

Audiologist  
Tracy James Hearing  
Berkshire

### Kathryn Woolley

Head of Audiology (retired)  
Bolton

### Kathryn Lewis

Head of Audiology  
Withington Community Hospital,  
Manchester University NHS FT, Manchester

### Jonathan Proffitt

Senior Calibration Engineer (Audiology)  
Withington Community Hospital,  
Manchester University NHS FT, Manchester

### Dr Marc Spinoza

Community Paediatrician  
Waltham Forest, London

[www.audiology-courses.co.uk](http://www.audiology-courses.co.uk)

