

Anne Davies



AUDIOLOGY



COURSES

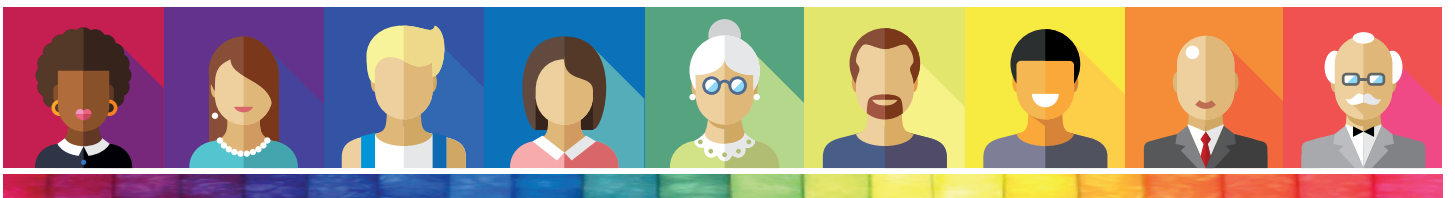


Steering a True Course

An Award-Winning Leadership Course,
Delivered by Senior Leaders in NHS Audiology

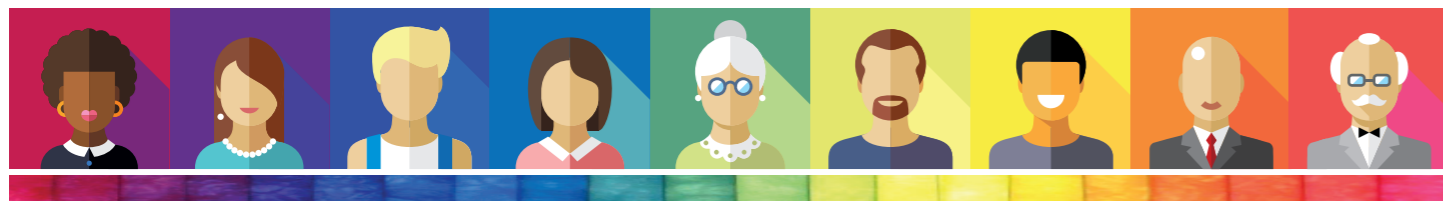
Tuesday 30th January -
Thursday 1st February 2024

Course Programme



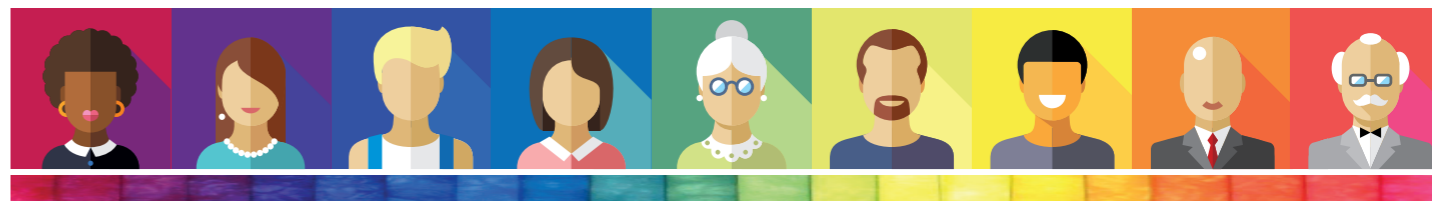
Tuesday 30th January 2024

| | |
|-------------|---|
| from 8.30am | Arrival and Coffee |
| 9.00am | Welcome and Introduction to the Course |
| 9.15am | Dr Jagjit Sethi Regional Chief Healthcare Scientist – NHS E East of England Regional Clinical Advisor for Physiological Sciences - NHS E South East Into the Labyrinth of UK Health and Social Care |
| 10.15am | Tony Corcoran Head of Service (retired), Bournemouth Epidemiology |
| 10.45am | Anne Davies Principal Clinical Scientist, Middlesbrough Time Management |
| 11.15am | Coffee Break |
| 11.30am | Ruth Thomsen Scientific Director NHS England (London Region) Compassionate Leadership in Complex Times |
| 12.30pm | Lunch |
| 1.30pm | Ruth Thomsen Scientific Director NHS England (London Region) Compassionate Leadership in Complex Times |
| 2.30pm | Dr Christine DePlacido Principal Clinical Scientist & Counsellor, Fife Maintaining Healthy Work Relationships - What Would Freud Do? |
| 3.30pm | Coffee Break |
| 3.45pm | Adam Beckman Head of Audiology Services, University Hospitals Plymouth NHS Trust Quality |
| 5.00pm | Dr Jagjit Sethi Regional Chief Healthcare Scientist – NHS E East of England Regional Clinical Advisor for Physiological Sciences - NHS E South East Mindfulness |
| 5.30pm | Close of day |
| 6.30pm | Evening meal, in the hotel restaurant |



Wednesday 31st January 2024

| | |
|---------|---|
| 9.00am | Coffee |
| 9.15am | Jonathan Parsons Managing Director, Consultant Clinical Scientist Chime Social Enterprise, Exeter Leadership - Some of What it Takes |
| 10.15am | John Day Clinical Director of Audiology Betsi Cadwaladr University Health Board, North Wales Strategic Management in Audiology - Recognising and Influencing the Bigger Picture |
| 11.15am | Coffee Break |
| 11.30am | Will Brassington Consultant Clinical Scientist, Head of Audiology Services University Hospitals, Birmingham Influencing Change: A Scientific Approach to Leadership |
| 12.30pm | Lunch |
| 1.30pm | Tony Corcoran Head of Service (retired), Bournemouth Provider Driven Service Development |
| 2.30pm | Dr John Fitzgerald Consultant Clinical Scientist Norfolk and Norwich University Hospitals Making Service Development Happen |
| 3.30pm | Coffee break |
| 3.45pm | Jonathan Parsons Managing Director, Consultant Clinical Scientist Chime Social Enterprise, Exeter From NHS Service to Social Enterprise - Some Reflections on the Journey and Destination |
| 4.45pm | Dr Christine DePlacido Principal Clinical Scientist & Counsellor, Fife Relaxation: A Taster Session |
| 5.30pm | Close of day No evening meal provided; please make your own arrangements |



Thursday 1st February 2024

| | |
|---------|--|
| 9.00am | Coffee |
| 9.15am | Dr Rachel McCarthy Consultant Clinical Scientist, Head of Audiology Royal Berkshire NHS Foundation Trust, Reading Deconstruct Your Service, Build a Case |
| 10.15am | Dr Christine DePlacido Principal Clinical Scientist & Counsellor, Fife Preventing Burnout |
| 11.15am | Coffee Break |
| 11.30am | Dr Rachel McCarthy Consultant Clinical Scientist, Head of Audiology Royal Berkshire NHS Foundation Trust, Reading Clinical Governance |
| 12.30pm | Lunch |
| 1.30pm | Will Brassington Consultant Clinical Scientist, Head of Audiology Services University Hospitals, Birmingham Leadership - The Uncut Guide! |
| 2.30pm | Coffee, Discussion, Closing Plenary Session |
| 3.15pm | Close of Course |

Chairs of Course

The Speaker Faculty
and
Amy Lennox
Director / Specialised Audiologist
Hypatia Training Ltd,
Hypatia Dizziness & Balance Clinic

www.audiology-courses.co.uk

