

Anne Davies



AUDIOLOGY



The 16th

Paediatric Assessment: A Refresher Course

An Introduction / Update for Behavioural Testing in Paediatric Audiology

Comments from previous course delegates

“The best learning environment I’ve been in,
in a long time.”

“A great refresher with up-to-date guidance.”

“A very valuable and insightful few days,
looking forward to implementing this knowledge.”

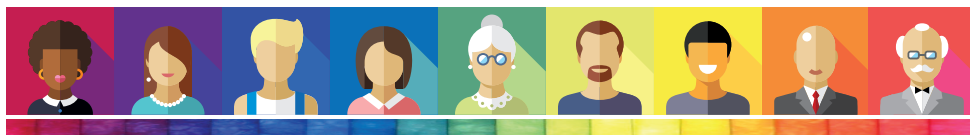
Course
fee:

£388
+VAT

Booking deadline:
Tuesday 30th
September 2025

Tuesday 4th -
Thursday 6th November 2025

The Park Royal Hotel, Stretton, Warrington



This is an introductory course to Paediatric Assessment (Behavioural Testing). The course is for Audiologists who are beginning to work in Paediatric Testing or who would like an update on current test protocols. The course faculty are experienced clinical staff, and the course focuses on the skills needed for effective testing and clinical management.

The course programme covers all the main behavioural tests, including speech discrimination testing and VRA using insert earphones and bone conduction. It also includes history taking, planning, communication, management decisions and report writing. Appropriate national guidelines for Paediatric Testing are referenced throughout the course.

The course will be of interest to professionals who work with paediatric audiologists and who wish to gain an insight into Paediatric Assessment clinics. It is also appropriate as a short focused orientation for non-graduates (including associate and assistant practitioners) who may be assisting in paediatric clinics.

The course does not cover objective testing, advanced practice or assessment of complex cases.

Accommodation and Travel

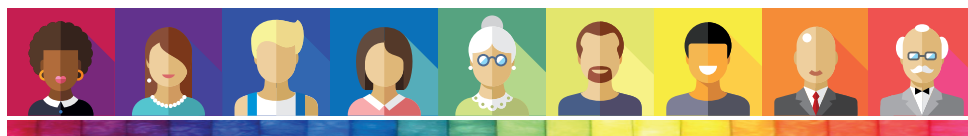
This is a non-residential course; delegates are responsible for booking their own accommodation. Accommodation costs are not included in the course fee.

The course venue is The Park Royal Hotel, Stretton Road, Stretton, Warrington WA4 4NS. This is on the outskirts of Warrington, a 15-20 min taxi ride from Warrington town centre. The Park Royal Hotel offers a discounted bed and breakfast rate for course attendees; please contact us for details.

The course fee includes evening meal on the Tuesday evening of the course at 6.00pm. On Wednesday evening, please make your own arrangements for evening meal.

Driving into and out of Warrington can be subject to considerable delay during rush-hour. We therefore recommend staying over, rather than driving daily to the course. Where the latter is unavoidable, please leave plenty of time for your journey.

Leaving the course early on the final afternoon is not advised. Train travel from the Warrington stations should be booked for no earlier than 4.45pm.

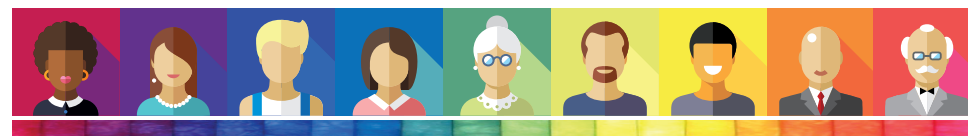


Course Faculty

Georgie Swainson	Clinical Scientist, Sheffield Children's Hospital NHS FT, Sheffield
Dr Greg Nassar	Consultant Clinical Scientist, Head of Audiology Services, Trafford Hospitals, Manchester University NHS FT, Manchester
Dr Trevor Foster	Clinical Lead (Paediatric Audiology), James Cook University Hospital, Middlesbrough
Ed Brown	Consultant Clinical Scientist, Head of Audiology (retired), Sunderland
Louise Hart	Audiologist, Tracy James Hearing, Berkshire
Kathryn Woolley	Head of Audiology (retired), Bolton
Kathryn Lewis	Head of Audiology, Withington Community Hospital, Manchester University NHS FT, Manchester
Jonathan Proffitt	Senior Calibration Engineer (Audiology), Withington Community Hospital, Manchester University NHS FT, Manchester
Dr Marc Spinoza	Community Paediatrician, Waltham Forest, London

Course Content

Paediatric Development Syndromes and Disorders Safeguarding Issues Calibration Essentials Planning the Session History Taking	Management Decisions Report Writing & Record Keeping Communicating with Parents Introduction to ANSD & APD Non-Organic Hearing Loss Introduction to Complex Cases	Visual Reinforcement Audiometry (VRA) Play Audiometry Speech Discrimination Testing Distraction Testing OAE, Tymps & Reflexes
--	--	--



Registering for the course

To register on the course, please complete the online course registration at:

www.audiology-courses.co.uk

Click on the course title, and then 'register now'.

Methods of Payment:

Purchase Order number and invoice address (supplier: Anne Davies Audiology Courses).

Cheque (payable to Anne Davies Audiology Courses).

Credit / debit card. Pay online at time of booking.

Monthly instalments by direct debit (UK customers). Two payments of 50% over two months, or three payments of 33.3% over three months, interest free.

If you are travelling from overseas and require a visa: once you register and pay, we can provide a letter confirming your place on the course. Please contact us to discuss.

For enquiries, please contact:

Anne Davies

Principal Clinical Scientist (Audiology)

Email: anne@audiology-courses.co.uk

Tel: 07985 075428

www.audiology-courses.co.uk

