

Anne Davies



AUDIOLOGY



COURSES

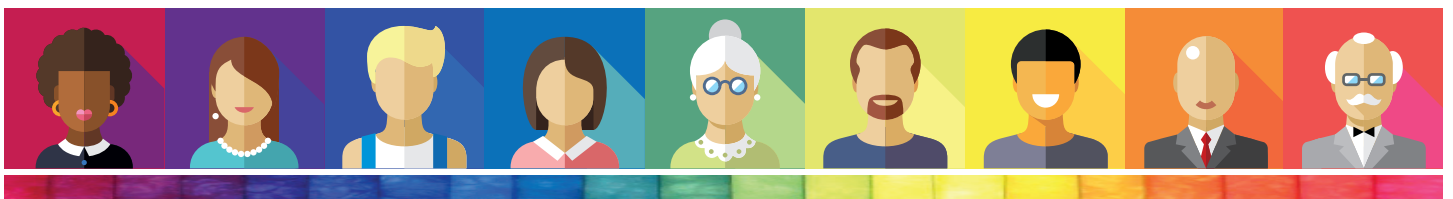


Paediatric Assessment: A Refresher Course

An Introduction / Update for Behavioural Testing in Paediatric Audiology

Tuesday 4th - Thursday 6th November 2025

Course Programme



Tuesday 4th November 2025

from 8.30	Arrival and Coffee
9.00	Welcome
9.10	Course Introduction
9.30	Paediatric Development
10.35	Break
10.50	History Taking
11.25	Calibration Essentials
12.30	Lunch
1.30	Children's Safeguarding Issues
2.20	Report Writing and Record Keeping
2.55	Visual Reinforcement Audiometry (VRA) Part 1
3.45	Break
4.00	Visual Reinforcement Audiometry (VRA) Part 2
4.50	Play Audiometry
5.20	Questions and Discussion
5.30	End of Day One
6.00	Evening meal, in the hotel restaurant

Wednesday 5th November 2025

8.45	Coffee
9.00	Introduction to ANSD and APD
10.05	Speech Discrimination Testing
11.10	Break
11.25	Non-Organic Hearing Loss
12.00	OAE, Tympanometry and Reflexes
12.45	Lunch
1.45	Planning the Session
3.30	Break
3.45	Syndromes and Disorders
5.05	Distraction Testing
5.35	End of Day Two
	No evening meal provided; please make your own arrangements

Thursday 6th November 2025

8.45	Coffee
9.00	Management Decisions
10.05	Communicating with Parents
10.50	Break
11.05	Introduction to Complex Cases
11.55	Case Presentations
12.30	Lunch
1.30	Workshop and Discussion
3.30	Closing Plenary Session
4.00	End of Course



Course Content

Paediatric Development A whistle-stop tour of stages in child development assessed by paediatricians as part of a paediatric history (including aspects of Down syndrome), which have implications for audiology testing.
History Taking The essentials of a good history, why and when. Appropriate questions to ask. Example of history taking in clinic.
Calibration Essentials The importance of calibration for paediatric audiology specifically.
Children's Safeguarding Issues Raising awareness of child protection issues in relation to audiology.
Report Writing and Record Keeping Essence and structure of a good report. Why we write them, who to, and what should they inform the recipient about.
Visual Reinforcement Audiometry (VRA) Part 1 Underlying principles of Visual Reinforcement Audiometry (VRA), room set-up, equipment. The practical procedure of performing VRA in the soundfield.
Visual Reinforcement Audiometry (VRA) Part 2 The challenges whilst performing VRA; tactics and good practice to obtain reliable results. The use of insert earphones and bone conductor transducers. Interpretation of VRA results.
Play Audiometry The requirements of the test, environment, and equipment. The suitability of play audiometry and the techniques, procedure and results. This is supported by a video demonstration.
Introduction to ANSD and APD A basic introduction to these conditions, diagnosis and management, case studies.
Speech Discrimination Testing The various types of speech tests available. Appropriate tests for developmental age. Examples of live test in a clinic.
Non-Organic Hearing Loss A brief overview of assessment options and test strategy, when managing children who present with non-organic hearing loss.
OAE, Tympanometry and Reflexes Test protocols, parameters and pitfalls. The difference between standard and high frequency tympanometry testing and results.
Planning the Session Why and when do we plan, using information from the referral and history, deciding which tests to use, interactive group work.
Syndromes and Disorders A review of causes of deafness including syndromes, infections and other disorders affecting hearing.
Distraction Testing Although this test is not now used routinely (and rightly so), the principles of the orienting reflex remain helpful for difficult to test children when VRA is not possible. Criteria for testing, equipment required, frequencies produced, room set-up and pitfalls.
Management Decisions Factors to be considered when formulating management plans. Discussion of case histories and management options.
Communicating with Parents Communications skills, scenarios and group work on explaining different results.
Introduction to Complex Cases Tips and tactics to get the most out of an assessment when testing is more complex or challenging than expected.
Case Presentations Examples of when to change how we assess and adapt when faced with more challenging cases in clinic.
Workshop and Discussion Hands-on work in small groups.

Course Faculty

Georgie Swainson

Clinical Scientist
Sheffield Children's Hospital NHS FT, Sheffield

Dr Greg Nassar

Consultant Clinical Scientist
Head of Audiology Services
Trafford Hospitals,
Manchester University NHS FT, Manchester

Dr Trevor Foster

Clinical Lead (Paediatric Audiology)
James Cook University Hospital, Middlesbrough

Ed Brown

Consultant Clinical Scientist
Head of Audiology (retired)
Sunderland

Louise Hart

Audiologist
Tracy James Hearing
Berkshire

Kathryn Woolley

Head of Audiology (retired)
Bolton

Kathryn Lewis

Head of Audiology
Withington Community Hospital,
Manchester University NHS FT, Manchester

Jonathan Proffitt

Senior Calibration Engineer (Audiology)
Withington Community Hospital,
Manchester University NHS FT, Manchester

Dr Marc Spinoza

Community Paediatrician
Waltham Forest, London

www.audiology-courses.co.uk

