

# Anne Davies



# AUDIOLOGY



COURSES



## Steering a True Course

An Award-Winning Leadership Course,  
Delivered by Senior Leaders in NHS Audiology

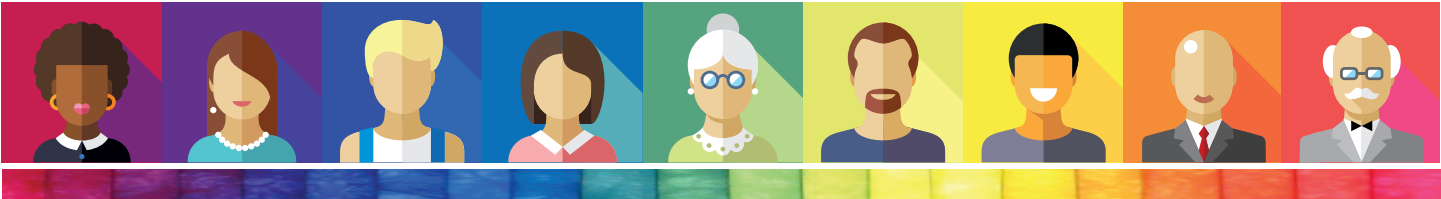
Tuesday 27<sup>th</sup> -  
Thursday 29<sup>th</sup> January 2026

## Course Programme



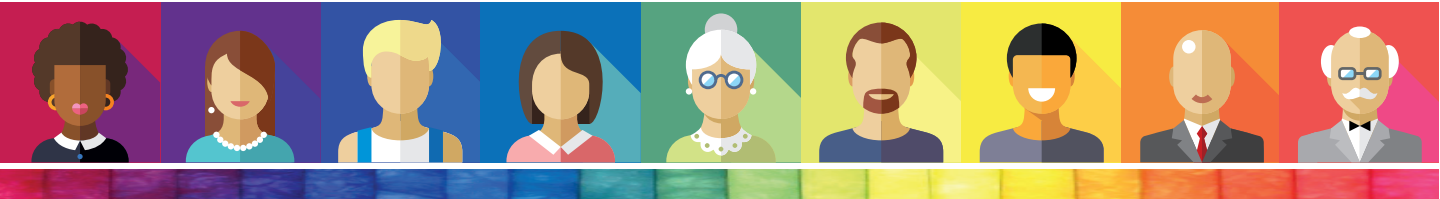
Tuesday 27<sup>th</sup> January 2026

from 8.30am	<b>Arrival and Coffee</b>
9.00am	Welcome and Introduction to the Course
9.15am	<b>Dr Jagjit Sethi</b> Regional Chief Healthcare Scientist – NHS E East of England Regional Clinical Advisor for Physiological Sciences – NHS E South East <a href="#">Into the Labyrinth of UK Health and Social Care</a>
10.15am	<b>Anne Davies</b> Principal Clinical Scientist, Middlesbrough <a href="#">Time Management</a>
11.00am	<b>Coffee Break</b>
11.30am	<b>Ruth Thomsen MBE</b> Scientific Director NHS England (London Region) <a href="#">Compassionate Leadership in Complex Times</a>
12.30pm	<b>Lunch</b>
1.30pm	<b>Ruth Thomsen MBE</b> Scientific Director NHS England (London Region) <a href="#">Compassionate Leadership in Complex Times</a>
2.30pm	<b>Dr Christine DePlacido</b> Principal Clinical Scientist & Counsellor, Fife <a href="#">Preventing Burnout</a>
3.30pm	<b>Coffee Break</b>
3.45pm	<b>Dr Jagjit Sethi</b> Regional Chief Healthcare Scientist – NHS E East of England Regional Clinical Advisor for Physiological Sciences – NHS E South East <a href="#">Into the Labyrinth of UK Health and Social Care (cont)</a>
4.45pm	<b>Dr Jagjit Sethi</b> Regional Chief Healthcare Scientist – NHS E East of England Regional Clinical Advisor for Physiological Sciences – NHS E South East <a href="#">Mindfulness</a>
5.30pm	<b>Close of day</b>
6.30pm	<b>Evening meal, in the hotel restaurant</b>



Wednesday 28<sup>th</sup> January 2026

9.00am	<b>Coffee</b>
9.15am	<b>Ruth Thomsen MBE</b> Scientific Director NHS England (London Region) <a href="#">Compassionate Leadership in Complex Times</a>
10.15am	<b>John Day</b> Clinical Director of Audiology Betsi Cadwaladr University Health Board, North Wales <a href="#">Strategic Management in Audiology – Recognising and Influencing the Bigger Picture</a>
11.15am	<b>Coffee Break</b>
11.30am	<b>Will Brassington</b> Consultant Clinical Scientist, Head of Audiology Services University Hospitals, Birmingham <a href="#">Influencing Change: A Scientific Approach to Leadership</a>
12.30pm	<b>Lunch</b>
1.30pm	TBC <a href="#">Ensuring Quality in an Ever-Changing World</a>
2.30pm	<b>Dr John Fitzgerald MBE</b> Consultant Clinical Scientist Norfolk and Norwich University Hospitals <a href="#">Making Service Development Happen</a>
3.30pm	<b>Coffee break</b>
3.45pm	<b>Will Brassington</b> Consultant Clinical Scientist, Head of Audiology Services University Hospitals, Birmingham <a href="#">Career Development and Career Pathways</a>
4.45pm	<b>Speaker Faculty: Questions and Discussion</b>
5.30pm	<b>Close of day</b> <b>No evening meal provided; please make your own arrangements</b>



## Thursday 29<sup>th</sup> January 2026

9.00am	Coffee
9.15am	<b>Dr Rachel McCarthy</b> Consultant Clinical Scientist, Head of Audiology Royal Berkshire NHS Foundation Trust, Reading <a href="#">Deconstruct Your Service, Build a Case</a>
10.15am	<b>Dr Christine DePlacido</b> Principal Clinical Scientist & Counsellor, Fife <a href="#">Maintaining Healthy Work Relationships - What Would Freud Do?</a>
11.15am	Coffee Break
11.30am	<b>Adam Beckman</b> Head of Audiology Services, University Hospitals Plymouth NHS Trust <a href="#">Clinical Governance</a>
12.45pm	Lunch
1.45pm	<b>Will Brassington</b> Consultant Clinical Scientist, Head of Audiology Services University Hospitals, Birmingham <a href="#">Leadership - The Uncut Guide!</a>
2.45pm	Coffee, Discussion, Closing Plenary Session
3.15pm	Close of Course

## Chairs of Course

The Speaker Faculty  
and  
**Amy Lennox**  
Director / Specialised Audiologist  
Hypatia Training Ltd,  
Hypatia Dizziness & Balance Clinic

[www.audiology-courses.co.uk](http://www.audiology-courses.co.uk)

